



2015 annual report



RICHLAND COUNTY FOUNDATION

2015 will be remembered as one of the most impactful years in the 70-year history of the Richland County Foundation.

We began the year by moving into our newly renovated office in January. Thanks to the generosity of a family, which spanned three generations; the Foundation was able to realize its long-term vision of having a permanent home. The Ritter House located at 181 South Main Street presented the perfect opportunity for the Foundation to make an investment into a neighborhood in transition and to demonstrate our mantra: For Good. For Ever.

The renovated house also represents a new welcome sign to visitors to the county seat from its southern portal, pointing to the exciting revitalization of Mansfield's central business district.

Acting on the initiative of being a driver of social capital, the Foundation committed to a five-year economic development investment plan. It is an exciting time as economic development organizations of Richland County are working collectively to strengthen existing economic development entities engaged in workforce development, business retention and expansion, support of emerging entrepreneurs, and organizational development assistance for burgeoning local businesses.

The economic development investment strategy is one of three significant initiatives established this year by the Foundation. The Foundation also invested in two nonprofit capacity building projects, the Osborne Meese Academy and Richland Gives.

The Osborne Meese Academy is a three-pronged approach to nonprofit capacity building and includes education, professional support and grant writing assistance.

To further assist nonprofit agencies, the Foundation hosted a day of giving called Richland Gives. The day was designed to encourage everyone to contribute to local nonprofits through a single giving website. The goals were to build capacity, grow philanthropy and make the community stronger.

All told in 2015, you will see on the following pages examples of the \$4.3 million fund holders of the Richland County Foundation invested in their communities. It is a testament to the growth of community foundations' expanding role in philanthropy.



Bradford Groves
President

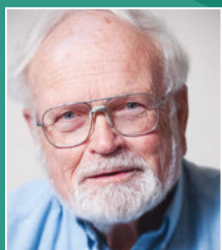
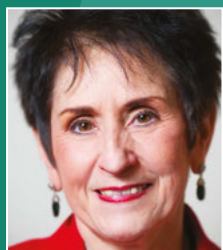
John C. Roby
Board of Trustees
Chairman

board of trustees

First Row (left to right)
 Pat Addeo
 Michael Bennett
 David Carto
 Michael Chambers
 *Bruce Cummins
 *Beth DeLaney

Second Row
 Chriss Harris
 Dr. Bruce Jackson
 Justin Marotta
 *Mark Masters
 Julie McCready
 Gunther Meisse

Third Row
 Glenna Cannon Plotts
 *John C. Roby
 Chandler Stevens
 Cathy Stimpert
 Sam VanCura



*Denotes officers

staff



Allura Watson
Program Officer



Robert Barrett, CPA
VP for Finance and Operations



Bradford Groves
President



Maura Teynor
Director of Donor Services and Communications



Jaclyn Schag
Administrative Assistant

for good, for ever

2015

**RICHLAND COUNTY FOUNDATION
STATEMENT OF ASSETS, LIABILITIES, AND NET ASSETS
MODIFIED CASH BASIS**

	<u>2015</u>	<u>2014</u>
ASSETS		
Assets		
Cash	\$ 607,549	\$ 970,880
Investments	131,466,274	138,150,596
Property and Equipment, Net	1,399,793	134,111
Construction in Progress	0	1,083,916
Intangible Asset	8,273	7,431
TOTAL ASSETS	<u>\$133,481,889</u>	<u>\$140,346,934</u>
LIABILITIES AND NET ASSETS		
Liabilities		
Payroll Taxes Withheld	\$ 1,297	\$ 1,313
Annuity Contracts Payable	57,177	59,955
Funds Held as Agency Endowments	5,992,682	6,088,424
Total Liabilities	<u>6,051,156</u>	<u>6,149,692</u>
Net Assests		
Unrestricted	66,222,869	71,571,721
Temporarily Restricted	39,825,453	41,574,222
Permanently Restricted	21,382,411	21,051,299
Total Net Assets	<u>127,430,733</u>	<u>134,197,242</u>
TOTAL LIABILITIES AND NET ASSETS	<u>\$133,481,889</u>	<u>\$140,346,934</u>

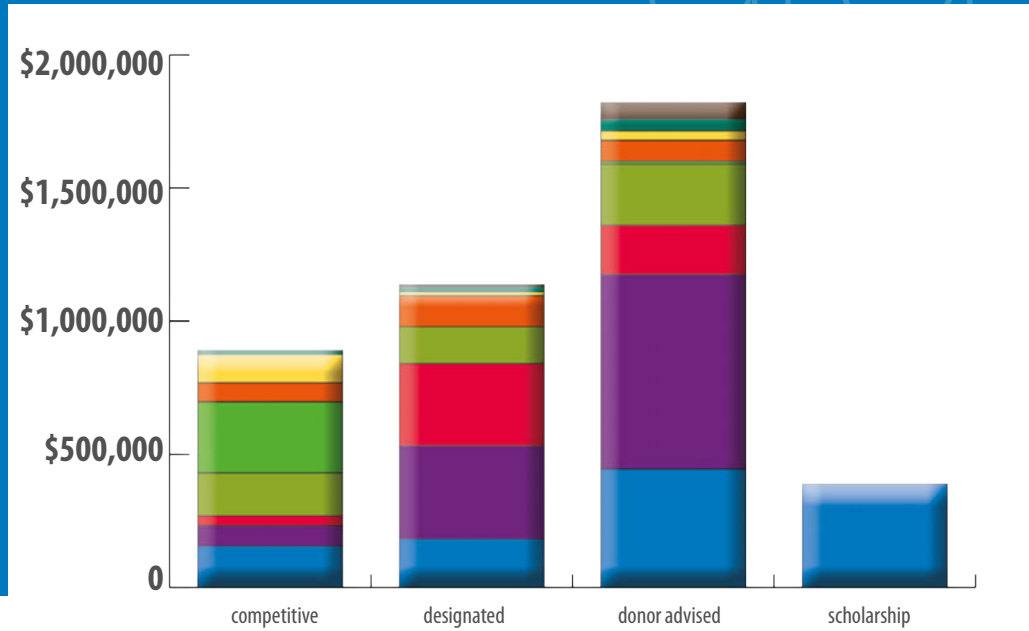
The financial information provided is taken from the financial statements as audited by Riester, Lump & Burton, CPA's, Inc. A copy of the complete audited statement is on file at the Foundation office and available upon request.



**STATEMENT OF REVENUE COLLECTED, EXPENDITURES PAID
AND OTHER CHANGES IN NET ASSETS
MODIFIED CASH BASIS**

	Unrestricted	Temporarily Restricted	2015 Permanently Restricted	Total	2014 Total
Revenue and Support					
Contributions	\$482,887	\$624,608	\$346,801	\$1,454,296	\$3,571,235
Investment Income					
Interest and Dividends	1,596,700	1,515,222	0	3,111,922	2,692,807
Net Realized Gains on Investments	700,194	789,048	0	1,489,242	3,267,083
Net Unrealized Losses on Investments	(4,905,489)	(2,625,458)	0	(7,530,947)	(769,188)
Less Investment and Custody Fees	(184,130)	0	0	(184,130)	(198,893)
Net Investment (Loss) Income	(2,792,725)	(321,188)	0	(3,113,913)	4,991,809
Change in Gift Annuity Value	0	(7,242)	0	(7,242)	(11,331)
Net Assets Released From Restrictions	1,315,307	(1,315,307)	0	0	0
Reclassification of Net Assets	841,071	(825,582)	(15,489)	0	0
Total Revenue and Support	(153,460)	(1,844,711)	331,312	(1,666,859)	8,551,713
Expenses and Other Deductions					
Net Grants Paid	4,235,319	0	0	4,235,319	4,207,717
Administrative Expenses	960,073	0	0	960,073	598,290
Total Expenses and Other Deductions	5,195,392	0	0	5,195,392	4,806,007
(Decrease) Increase in Net Assets Before Current Year Change in Agency Liability	(5,348,852)	(1,844,711)	331,312	(6,862,251)	3,745,706
Current Year Change in Agency Liability	0	95,942	(200)	95,742	(60,870)
(Decrease) Increase in Net Assets	(5,348,852)	(1,748,769)	331,112	(6,766,509)	3,684,836
Net Assets at Beginning of Year	71,571,721	41,574,222	21,051,299	134,197,242	130,512,406
Net Assets at End of Year	\$66,222,869	\$39,825,453	\$21,382,411	\$127,430,733	\$134,197,242

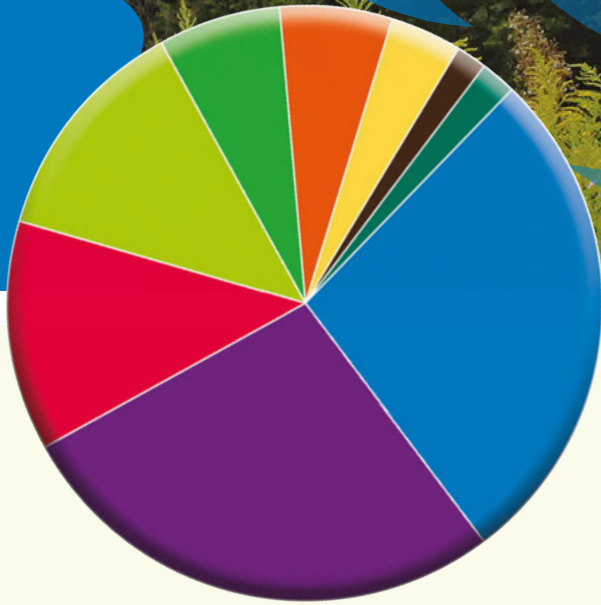
program area



2015 Grants by Fund Type and Program Area

	<i>competitive</i>	<i>designated</i>	<i>donor advised</i>	<i>scholarship</i>	<i>total awarded</i>
Education	155,750	182,480	445,609	388,900	1,172,739
Community Development	77,742	350,433	729,012	–	1,157,187
Arts & Culture	37,000	309,117	185,721	–	531,838
Children, Families & Youth	160,578	136,109	229,816	–	526,503
Economic Development	267,610	–	10,000	–	277,610
Human Services	71,182	116,806	79,416	–	267,404
Health Services	107,026	15,458	34,900	–	157,384
Environment	14,500	18,194	44,450	–	77,144
Churches	–	8,976	63,001	–	71,977
Total	\$891,388 (21%)	\$1,137,573 (27%)	\$1,821,925 (43%)	\$388,900 (9%)	\$4,239,786 (100%)

mission



Total 2015 Grants by Program Area

Education	1,172,739
Community Development	1,157,187
Arts & Culture	531,838
Children, Families & Youth	526,503
Economic Development	277,610
Human Services	267,404
Health Services	157,384
Environment	77,144
Churches	71,977

Total \$4,239,786

The mission of the Richland County Foundation is to improve and enhance the quality of life in Richland County through strategic philanthropy and community leadership.

Provide Leadership and act as a catalyst in identifying and addressing emerging community needs.

Distribute Grants for charitable purposes in the areas of Health, Economic and Community Development, Basic Human Needs, Education, Arts & Culture, the Environment, and Community Services.

Prudently Manage the Foundation's resources to achieve the maximum benefit for Richland County in perpetuity.

Identify and Cultivate Donors of all economic means and charitable interests.

Assist Donors in establishing funds to meet community needs and distribute proceeds in accordance with the donor's intent.





Many business retention and expansion visits were made including one to Skybox Packaging with Marc Miller and Marty Rice and Ohio Dreams with Chris and Val Ashcraft, far right on page 9.

Vicki Kane, Harmony House, Kathy Ezawa, Domestic Violence Shelter, Mary Jo Hull, Friendly House board member and Chelsie Thompson, Renaissance Theatre participate in the marshmallow challenge during the Osborne Meese Academy.

\$1.1 M investment in economic development

The Foundation invested \$1.1 million in a transformative five-year plan to address local business retention and expansion, workforce development and entrepreneurship.

The RCF engaged JumpStart Inc. to lead this new effort along with a consortium that includes Team NEO and New Growth Group.

Proactive grant making is new to the RCF. Since it was founded in 1945, the Foundation has fostered philanthropy, accepted applications for funding from local nonprofits and awarded grants totaling more than \$69 million. The Foundation is committed to continuing its support of nonprofit organizations.

Meanwhile, the Foundation has had many funding requests over the past few years from economic development organizations, but the effectiveness of those programs has been difficult to measure and often is not linked to local organizations doing similar work.

“We are not the economic developers. Our Board of Trustees, while recognizing the valuable work already underway in the community, has decided to commit resources to a long-term strategic plan,” said Groves.



The Osborne Meese Academy began in January with 20 nonprofit organizations to provide education, professional support and grant writing assistance.



The Ohio Bird Sanctuary and Little Buckeye Children's Museum participated in Richland Gives.



The strategic plan called **Richland Partnership** includes:

- The centralization of business retention and expansion and workforce development efforts
- A scale-up program to identify and target services to area companies to address specific challenges and catalyze growth
- The empowerment of existing organizations to promote entrepreneurship and related services across the county
- A community website to serve as an economic performance dashboard to track successes and show progress toward important goals

Richland County Job and Family Services initially is investing \$50,000 in the workforce development portion of the project.

The economic development investment strategy is one of three significant RCF initiatives established this year by the Foundation. RCF devoted more than \$125,000 in two nonprofit capacity building projects the Osborne Meese Academy and Richland Gives.



**RICHLAND
GIVES**

To further assist nonprofit agencies, RCF hosted a day of giving called Richland Gives. The day was designed to encourage everyone to contribute to local nonprofits through a single giving website. The goals of the day are to build capacity, grow philanthropy and make the community stronger.

65
nonprofit
organizations
participated

513
online donations
made to local
charities

\$675,665
raised
to support our community

The Foundation has a permanent home



Due to the generosity of a donor with a passion for historic building preservation, the Foundation has a permanent home at 181 South Main Street.

The Foundation staff moved into the Queen Anne Victorian brick home on January 20. The renovation project began in December 2012 when the Foundation received the William Ritter House as a donation along with monetary support to build a boardroom addition and renovate the existing house.

The house was built in 1891 by William Ritter, son of Joseph Ritter, owner of Joseph Ritter & Sons Company. It is listed on the national historic registry. The location on South Main Street was out of the ordinary at the time because larger homes were built on Park Avenue West.

James Calvert bought the house in 1908. His descendents owned the home for more than 90 years.

While the new location provides increased exposure of the presence of a community

foundation in Richland County, the decision to relocate was rooted in the Foundation's strategic plan:

- Create a positive first impression to visitors entering Mansfield.
- Be a leader in the transformation of a declining neighborhood.
- And most importantly, demonstrate the Foundation's commitment to its slogan: For Good. For Ever.

When it was acquired, the house had been neglected for several years and was devoid of woodwork and a staircase.

Dan Seckel of Seckel Group Architects used photographs to plan the restoration to its original grandeur. Julie McCready of McCready Interiors and Norwalk the Furniture Idea researched the color palette, flooring and furnishings. With the help of many workers, Mr. Seckel and Ms. McCready created a beautiful home that serves as a functional, professional environment for a nonprofit organization.

Duffy Carto, Foundation Board of Trustees member, Traycee Davis and Junior Wood attended a reception to celebrate the new home of the Foundation.



Engwiler Properties of Mansfield was the general contractor with Junior Wood as the project manager.

Again using old photographs, Bill Vidonish of Vidonish Studio in Lexington recreated the stained glass window over the main staircase. Other artisans crafted the custom-made woodwork, staircase, two porches, windows and floors.

Parts for the main staircase including spindles, finials and newel posts were found in a Chicago resale warehouse. The mantles were purchased from warehouses in Ohio.



above: Foundation supporters Edie and Joe Humphrey and Ludi and Debbie Schenk listen to details about the Foundation's new home.

right: Julie McCready, co-owner of McCready Interiors and Norwalk the Furniture Idea, Bob Jacobsen, grandson of Clara Calvert, Maura Teynor, director of donor services and communications, Brady Groves, president, Bob Barrett, vice president of finance, Jaclyn Schag, administrative assistant and Allie Watson, program officer pose on the staircase.



College Scholarships

Scholarships

299 Scholarship grants
\$388,900

Competitive

Ashland University

Dwight Schar College of Nursing
Capital Campaign — \$50,000

Mansfield City Schools

Math Camp — \$750

**North Central State College
Foundation**

Richland Gives — \$1,500

Ohio State University Foundation

The Learning Collaborative
Classroom — \$100,000

The Foundation Center

General Support — \$3,500

Designated

Ashland University

Purchase Library Books — \$571

Clear Fork Valley Foundation

Grants and Scholarships — \$6,518

Discovery School

General Support — \$4,500

Guernsey Foundation

College Scholarships — \$1,000

Lucas Local Schools

Educational Programs Support
(7 grants) — \$24,468

Mansfield City Schools

Educational Programs (2 grants)
— \$1,639

Methodist Theological Seminary

Scholarship for a Richland County
Resident — \$234

North Central State College

Financial Aid to Richland County
Students — \$3,758

**North Central State College
Foundation**

General Support — \$34,495

**The Ohio State University
- Mansfield**

Scholarship Support — \$25,259

Business Development Support
— \$25,927

Faculty Development Support
— \$6,647

Financial Aid to Richland County
Students — \$15,000

Ontario Local Schools

General Support for Technology
Programs — \$7,464

**Pioneer Career & Technology
Center**

Scholarships & Awards (2 grants)
— \$25,000

Donor Advised

Ashland University

Capital Campaign — \$10,000

Dwight Schar College of Nursing
Capital Campaign — \$20,000

Ashbrook Center (3 grants)
— \$12,500

Ashbrook Teacher in Every School
Program — \$8,243



Brown University

General Support — \$3,000

Denison University

General Support — \$1,000

Discovery School

Building Construction — \$50,000

General Support (2 grants) — \$2,000

Educational Programs — \$10,000

Emma Willard School

General Support — \$3,000

Lucas Local Schools

Scholarships & Awards — \$1,000

Purchase Supplies — \$2,500

Mansfield Christian School

General Operating — \$6,000

Mansfield City Schools

Educational Programs (5 grants) — \$89,906

Capital Improvements — \$5,915

Mansfield Rotary Club Foundation

Scholarships — \$2,700

North Central State College

New Classroom Suite for College Now Program — \$50,000

Scholarships — \$20,000

North Central State College Foundation

Entrepreneurial Hall of Fame — \$3,000

Powering the Journey

Capital Campaign — \$25,000

Emerald Club — \$250

The Ohio State University - Mansfield

Scholarship Support (2 grants) — \$11,334

Capital Campaign — \$1,250

Property Improvements — \$25,000

Renewal Work on the Library — \$3,000

The Ohio State University Foundation

Nursing Scholarship Endowment — \$50,000

Plymouth-Shiloh Local Schools

Art and Music Grant — \$12,085

Saint Peter's Parish

Scholarship — \$2,500

Soldiers & Sailors Memorial Museum

General Support — \$1,000

Special Projects/Displays — \$750

TEACHER ASSISTANCE PROGRAM GRANTS

11 Grants — \$12,676

Clear Fork Valley Schools

Eighth Grade STEM Class

Live Right! Know Your Blood Type!

Crestview Local Schools

Pedometer Power

Learning to Code with Ozobot Bit

Lexington Local Schools

Score with the Common Core!

Seasonal Scientists

Stained Glass Collaboration Installation

Mansfield City Schools

Empowered Against Injustice:

By the Lives of Other

Games Forever for Special Needs Kids

Saint Mary Elementary School

The Great Outdoor Experience

Saint Mary's Catholic School

Building Literacy through Lego Education

EDUCATION

[376 Grants]

\$1,172,739



education

376 grants
\$1,172,739

First grade students at Lexington Central Elementary had fun learning about birds using materials purchased from a Teacher Assistance Program grant.



The Foundation granted \$388,900 in college scholarships to 299 students in 2015.



Competitive

Friendly House Association

Program Support for Club 36 — \$13,410

Richland Gives — \$500

Mansfield Area Y

Open Doors Program — \$50,000

Parent Aide Program, Inc.

Richland Gives — \$500

Raemelon Therapeutic Equestrian Center

Equine-Based Therapy Scholarships — \$31,705

Richland Carrousel Park, Inc.

Touch-a-Truck Event — \$ 250

Capital Improvements — \$54,713

Richland County Children's Auxiliary, dba The Store

Osborne Meese Academy — \$ 3,000

The Little Buckeye Children's Museum

Richland Gives — \$1,500

Osborne Meese Academy — \$5,000

Designated

32 Degree Masonic Learning Centers for Children

General Support — \$ 39,475

Friendly House Association

General Support (5 grants) — \$2,915

Mansfield Area Y

General Support (3 grants) — \$7,434

Support of Women and Children's Programs (3 grants) — \$18,872

Richland Carrousel Park, Inc.

General Support — \$ 21,893

Richland County Children Services

The Children Services Gift Fund (3 grants) — \$2,680

Richland County Children's Auxiliary, dba The Store

General Support — \$370

Richland Pregnancy Services

General Support — \$2,913

Toy Time, Inc.

General Support — \$ 82

Trapshooting Hall of Fame

General Support — \$39,475

Donor Advised

Big Brothers/Big Sisters of North Central Ohio

General Support — \$ 3,000

Culliver Reading Center

General Support (2 grants) — \$5,300

Florida Sheriffs Youth Ranches, Inc

General Support — \$1,000

Friendly House Association

Capital Improvements (2 grants) — \$47,000

Happy Hollow Camperships — \$2,000

Internship Program — \$ 614

Support for Hidden Hollow Camp — \$500

General Support (2 grants) — \$1,000

Program Support — \$25,000

Friends of Maize Memorial Dog Park

Program Support — \$1,500

Galion Community Center YMCA

Capital Campaign — \$15,000

Youth Sponsor — \$500



Harmony House Homeless Services, Inc.

General Support — \$5,000
West Dickson Property Renovation — \$20,000
Program Support (2 grants) — \$7,500
Internship Program — \$ 3,915

Mansfield Area Y

Internship Program — \$4,200

Parent Aide Program, Inc.

General Support (2 grants) — \$ 3,000

Raemelton Therapeutic Equestrian Center

General Support (3 grants) — \$13,000
Program Support — \$3,000
Scholarships — \$500
Internship Program — \$ 4,200

Richland Carrousel Park, Inc.

Program Support — \$10,000

Richland County Children’s Auxiliary, dba The Store

General Support — \$500

The Little Buckeye Children’s Museum

Internship Program (2 grants) — \$ 6,300

Youth Haven, Inc.

General Support — \$1,000

CONNECTIONS FUND GRANTS

3 Grants — \$ 3,879
See page 32 for more information

WOMEN’S FUND GRANTS

5 Grants — \$13,378
See page 31 for more information

SUMMERTIME KIDS PROGRAM

15 Grants — \$28,030
City of Mansfield - Hooked on Fishing, Not Drugs
The Domestic Violence Shelter, Inc. - Summertime Fun
First English Lutheran Church - FELCDS Summer Day Camp
Friendly House Association - Summer Fun Program
Harmony House Homeless Services, Inc. - Kids Vacation
Hospice of North Central Ohio, Inc. - KIDSCENE

The Little Buckeye Children’s Museum - Access to All

Mansfield Area Y - Serving Up Summer

Mohican School in the Out-of-Doors Inc. - Connecting with Nature

Ohio Bird Sanctuary - Friendly House Nature Camp

Raemelton Therapeutic Equestrian Center - Abilities Rising Camp

Renaissance Performing Arts - Camp Broadway

Richland County Board of DD - Richland Newhope Campership Program

The Salvation Army - Space Explorers: Our Universe & Summer A.R.T.

Shelby Church of the Nazarene - Twist (Challenge with a TWIST!)

CHILDREN, YOUTH, FAMILIES

[87 Grants]

\$526,503



87 grants
\$526,503

children
families
youth



The Mansfield Y received a Summertime Kids grant for its Serving Up Summer program. Children learned how to take care of a vegetable garden.

Maddie was able to ski at Snow Trails with the help of The Adaptive Adventure Sports Coalition instructors and a Foundation grant for equipment and scholarships.



Competitive

Mansfield Art Center

Community Sculpture— \$4,000

Neos Dance Theatre

Ballet @ the Brickyard— \$8,500

Renaissance Performing Arts

Osborne Meese Academy— \$1,500

Renaissance Youth Performances— \$14,000

Richland Academy of the Arts, Inc.

The Nutcracker Ballet Production — \$9,000

Designated

Children's Theatre Foundation, Inc.

General Support — \$1,423

Lucas Local Schools

Veterans Wall of Honor — \$1,000

Mansfield Art Center

General Support (6 grants) — \$15,831

Mansfield Community Playhouse

General Support — \$ 407

Renaissance Performing Arts

General Support of the Theatre (8 grants) — \$207,983

General Support of the Mansfield Symphony (5 grants) — \$59,077

Purchase of Piano — \$2,075

Richland Academy of the Arts, Inc.

General Support — \$649

Program Support — \$1,403

Richland County Historical Society

General Support — \$14,500

Richland County Museum

General Support — \$4,769

Donor Advised

Artis-Naples

General Support— \$2,000

Atlanta Lyric Theater

Education Program— \$1,000

Funk Heritage Museum

Hickory Log Collection— \$500

Georgia Museums, Inc.-Booth Western Art Museum

General Support— \$1,000

Education Department Support — \$2,000

Harrison Center for the Arts

General Support — \$500

Lizzadro Museum of Lapidary Art

General Support — \$1,000

Mansfield Art Center

Debt Elimination — \$40,000

General Support — \$2,000

Program Support (3 grants) — \$8,121

Internship Program — \$ 4,200

Mansfield Community Playhouse

General Support — \$1,000

Neos Dance Theatre

Program Support (3 grants) — \$8,500

Reinhardt University

Support for Falany Performing Arts Center — \$ 1,000

Renaissance Performing Arts

Technology Upgrade — \$7,500

General Support — \$1,000

Support for Marketing and Growth (2 grants) — \$60,000

Program Support (2 grants) — \$25,000

Internship Program — \$8,400

Richland Academy of the Arts, Inc.

Program Support — \$5,500

Scholarships — \$300

Internship Program — \$4,200

Rocky Mountain Repertory Theatre

General Support — \$1,000

ARTS & CULTURE

[61 Grants]

\$531,838



Competitive

Catholic Charities

Community Emergency Services — \$56,394

Planned Parenthood of Greater Ohio

Richland County Community Outreach — \$11,500

The Domestic Violence Shelter, Inc.

Osborne Meese Academy (2 grants) — \$3,288

Designated

American Red Cross

General Support (2 grants) — \$238

Catalyst Life Services

Support for New Beginnings Program — \$1,782

Mansfield Cancer Foundation

General Support (4 grants) — \$26,524

Richland Newhope Industries, Inc.

Program Support (3 grants) — \$23,100

The Domestic Violence Shelter, Inc.

General Support (2 grants) — \$2,763

The Salvation Army

General Support (7 grants) — \$60,617

Volunteers of America

General Support — \$1,782

Donor Advised

American Red Cross

General Support — \$3,000

Disaster Relief Fund — \$10,000

Catholic Charities

General Support (2 grants) — \$3,500

Internship Program — \$4,200

Mansfield Cancer Foundation

General Support — \$1,000

Mary McLeod-Bethune Intervention & Enrichment

Internship Program — \$4,200

Ohio Heartland Community Action

Food Pantry — \$500

Planned Parenthood of Greater Ohio

General Support (2 grants) — \$1,250

Internship Program — \$3,766

Shelby Help Line Ministries

General Support — \$3,000

The Domestic Violence Shelter, Inc.

General Support — \$3,000

Internship Program — \$4,200

The Salvation Army

General Support (2 grants) — \$3,100

Internship Program — \$4,200

Support for Rent Assistance Program — \$30,000

Mansfield Food Pantry — \$500

HUMAN SERVICES

[43 Grants]

\$267,404



43
grants

\$267,404



The North End Community Improvement Collaborative held a weekly farmer's market.

Human Services Grants

Competitive

Downtown Mansfield, Inc.

Osborne Meese Academy (2 grants) — \$6,500

Richland Gives — \$500

Lucas Community Center

Lucas Community Center Programs—\$50,000

Mansfield Police Department

Patrol Bicycles — \$ 9,992

North End Community Improvement Collaborative, Inc.

Richland Gives — \$250

Philanthropy Ohio

Endow Ohio — \$500

Richland County Habitat For Humanity

Richland County Habitat ReStore —\$10,000

Designated

Boy Scouts Heart of Ohio Council

General Support (2 grants) — \$27,888

Program Support (2 grants) — \$17,741

Kingwood Center

General Support (4 grants) — \$32,750

Mansfield Area Intergroup

General Support — \$610

Mansfield Richland Cty Public Library

Books and Talking Books — \$2,665

General Support — \$311

Mansfield Rotary Club Foundation

McGowan Courage Awards — \$5,430

North End Community Improvement Collaborative, Inc.

General Support (4 grants) — \$229,833

Ohio Genealogical Society

General Support — \$237

Richland County Habitat For Humanity

General Support — \$156

United Way of Richland County

General Support (2 grants) — \$23,812

Friendly House Capital Improvements — \$9,000

Donor Advised

Boy Scouts Heart of Ohio Council

After School At-Risk Program — \$5,000

General Support — \$10,000

City of Mansfield

Summer Enrichment Camp — \$12,000

Purchase Land at North Lake Park — \$13,424

Internship Program (2 grants) — \$8,400

Crawford County United Way, Inc.

General Support — \$1,000

Delaware County Foundation

Program Support — \$5,000

Downtown Mansfield, Inc.

2015 Final Friday Concert Series— \$2,000

Brickyard Capital Improvement — \$15,000

Internship Program (2 grants) — \$6,300

Friends of 179th Airlift Wing

Program Support — \$ 2,500

Galion Community Foundation

Support for Galion Community Chorus Fund — \$ 250

Humane Society of Richland County

General Support — \$1,000

Kingwood Center Gardens

Internship Program — \$4,200

Lucas Community Center

General Support (3 grants) — \$76,500

North End Community Improvement Collaborative, Inc.

General Support (6 grants) — \$307,444

North End Local Foods (3 grants) — \$124,155

ROAR Program 2015-6 School Year — \$47,759

Internship Program — \$8,400

Ohio Special Response Team, Inc.

Training Program — \$ 500

Plymouth-Shiloh Food Pantry

Holiday Meal Groceries — \$1,180

Richland County Habitat For Humanity

General Support — \$2,000

Shelby Senior Citizens Center, Inc.

Interior Painting — \$1,500

The Fun Center Chordsmen

Choral Camp — \$500

Summer Scholarships — \$2,000

United Way of Richland County

General Support (4 grants) — \$21,000

Friendly House — \$50,000

COMMUNITY & COMMUNITY DEVELOPMENT [70 Grants] \$1,157,187



Competitive

JumpStart Inc.

Support for Richland County Economic Plan (5 grants) — \$228,000

Richland Community Development Group

Support for Community Development — \$39,610

Donor Advised

Crawford Co. Economic Dev. Dept.

Program Support — \$5,000

Richland Community Development Group

Program Support — \$5,000

ECONOMIC DEVELOPMENT

[8 Grants] \$277,610



Designated

First Christian Church

General Support — \$133

First Congregational Church

General Support (3 grants) — \$3,535

Support for Individual Assistance Program — \$663

Music Department Support — \$1,630

First Presbyterian Church (U.S.A.)

General Support (2 grants) — \$2,540

Saint John's United Church of Christ

General Support — \$475

Donor Advised

First Congregational Church

Program Support — \$1,000

Resurrection Parish

General Support — \$50,000

Saint James Episcopal Church

Capital Campaign — \$5,000

Saint Peter's Parish

Program Support — \$5,001

Waleska United Methodist Church

Support for Music Department — \$2,000

CHURCHES

[14 Grants] \$71,977

Competitive

Ohio Bird Sanctuary

Richland Gives (2 grants) — \$1,000

Richland County Agriculture Society

Ohio Native Plant Educational Park — \$13,500

Designated

Gorman Nature Center

General Support — \$156

Ohio Bird Sanctuary

General Support — \$ 18,038

Donor Advised

The Cousteau Society, Inc.

General Support — \$ 250

Gorman Nature Center

Internship Program (2 grants) — \$6,300

The Nature Conservancy

General Support — \$250

North Central Ohio Land Conservancy, Inc.

General Support (2 grants) — \$3,400

Support for Hiking Trail — \$3,000

Land Purchase — \$7,500

Ohio Bird Sanctuary

Program Support — \$5,000

Internship Program (2 grants) — \$10,500

Richland County Agriculture Society

Ohio Native Plant Educational Park — \$8,000

General Support — \$250

ENVIRONMENT [18 Grants] \$77,144

Members of the North End Community Improvement Collaborative, local government officials, community members and volunteers worked to create the Blust Avenue Teaching Garden. Children also volunteered and worked in the garden.

Lucas Community Center Treasurer Carrie Fanello gave a tour of the new center which will offer services such as a food pantry, latchkey program, children's activities, a house of prayer, counseling services and a computer lab.

Judy Bemiller and Kate Peresie enjoyed a view of the prairie on a hike of the Clear Fork Scenic Valley Trail in southern Richland County. The trail was created by the North Central Ohio Land Conservancy with support from the Foundation.



20 Economic Development grants

15 Church grants

15 Environment grants

Competitive

Catalyst Life Services

Program Support for Parenting Education — \$17,526

Dayspring

Good Health Choices Program — \$250

Mansfield Memorial Homes

Support for Homemaker/Home Health Programs — \$25,000

Support for Rotary Adult Daycare — \$15,000

Taking Root Farms

Richland Gives — \$250

Osborne Meese Academy — \$4,000

Third Street Family Health Services

Shelby Office Renovation — \$45,000

Designated

Alzheimer's Association-Northwest Ohio Chapter

General Support — \$ 373

Catalyst Life Services

General Support — \$3,855

Hospice of North Central Ohio, Inc.

General Support — \$4,312

Mansfield Memorial Homes

General Support (2 grants) — \$5,026

OhioHealth Foundation

General Support of MedCentral Hospital — \$156

OhioHealth MedCentral Mansfield Hospital

General Support — \$ 1,531

Third Street Family Health Services

General Support — \$ 205

Donor Advised

Akron Children's Hospital Foundation

Support for Programs in Richland County — \$5,000

American Cancer Society East Central Division

General Support — \$1,000

Avita Health Foundation

General Support — \$5,000

Avow Hospice of Naples

General Support — \$1,000

Catalyst Life Services

Internship Program — \$ 4,200

General Support — \$5,000

Program Support — \$3,000

Dayspring

Capital Improvements — \$2,500

Hospice of North Central Ohio, Inc.

Internship Program — \$4,200

Naples Community Healthcare System

General Support — \$ 1,000

OhioHealth MedCentral Mansfield Hospital

Support for Hospice Program — \$1,000

Visiting Nurses Assoc. of Mid-Ohio

General Support — \$2,000

HEALTH SERVICES

[27 Grants]

157,384

health
services



2015 Health Services grants

Residents enjoy activities (bean bag toss) at Mansfield Memorial Homes Rotary Adult Daycare.



To create a new fund or more information contact Maura Teynor, director of donor services and communications at 419-525-3020 or mteynor@rcfoundation.org



We Can Help you Leave a Charitable Legacy

Five easy steps to establish a charitable fund at Richland County Foundation.

1. Determine your charitable interests and intent.
2. Pick the type of fund that best meets your purpose. When you choose to establish an endowed fund your original gift remains intact and is invested for growth. A portion of the earnings, as defined by the spending policy, can be granted to public charities.
3. Choose a name for your fund. You may use your name or the name of a family member, a name representing your favorite cause, as a memorial, or a name that allows you to be anonymous.
4. Decide on a timeline for giving. Funds can be established immediately or as a deferred gift or bequest through your will.
5. Review the many types of contributions available to make an initial gift. You can contribute cash, marketable securities, or other property. Charitable distributions from IRAs are an especially tax effective type of gift.

A separate named fund can be established with a gift of \$10,000 and a scholarship fund can be established with a gift of \$20,000. A fund can accept additional donations at any time.

Services to Donors

Managing the fund and overseeing its investment.

Providing the services of our experienced grant making staff

Assuring that grants follow the fund directions and are always awarded in the name of your fund, to ensure a lasting symbol of your caring.

Providing regular financial reports regarding activity of the fund and regular information about foundation activities.

Benefits of a fund with the Richland County Foundation

Permanence: Gifts can give forever because the Foundation invests the charitable capital to make certain there are resources for the future. The donor may direct the fund to be granted out over a specified number of years.

Flexibility: The Richland County Foundation offers unique flexibility, making it possible for donors to benefit a variety of philanthropic purposes.

Tax Benefits: As a public charity, the Foundation offers maximum tax benefits.

Financial Management: Maximizing returns while minimizing expenses, the Foundation has a diversified investment portfolio.

Security: A volunteer Governing Committee of experienced community leaders oversees Foundation management and use of funds.

Anonymity: If desired, the identity of the donor can be protected.





unrestricted

Establishing a fund within the Foundation allows donors the freedom to specify how they want their charitable dollars to be used now and in the future. By selecting among the various options, an unrestricted fund, a field of interest fund, a donor designated fund, a donor advised fund, an agency fund, or a scholarship fund, donors can tailor their fund to be as specific or as broad as they wish in order to carry out their philanthropy.

Unrestricted Funds offer the donor and Foundation the broadest options to address and to impact the community's current and ever-changing needs.

- Anonymous Donor Community Support Fund
- C. Wilson & Josephine Mayberry Barnes Fund
- Robert B. Black Fund
- Roger A. & Elizabeth Thomas Black Fund
- Betty J. Blackstone Fund
- Virginia A. & Thomas C. Blizzard Fund
- Board Discretionary Fund
- Marion B. Bowers Fund
- Katharine C. Bristol Fund
- Roy G. & Nancy Y. Brown Fund
- Helen M. Burkholder Fund
- Joan B. & Truman Clark Fund
- Rex E. & Marjorie Sue Collins Fund
- Community Endowment Fund
- John B. & Pearl R. Conard Charitable Fund
- Consolidated Memorial Fund
- Marian M. Constance Fund
- William R. & Mary Jane Cress Fund
- Pearl M. Danback Fund
- Earle J. & Dottie Deems Fund
- Dean A. & Eleanor H. Eckert Fund
- Jessie L. Eckert Fund
- Doris J. & Robert H. Enskat Fund
- David W. & Louise W. Evans Fund
- David N. & Miriam G. Feiser Memorial Fund
- Fellows Fund
- Charles C. Fox Fund
- Florence Fox Fund
- James H. Germany Fund
- Carl B. & Marie L. Gibson Fund
- Earl H. Goetz Fund
- Roger M. & Elizabeth B. Gray Fund
- James H. Hoffman Fund

- Herbert S. Jones Fund
- Jesse LaDow Fund
- Nanciann P. McCormick Fund
- Dell Armstrong McMillen Fund
- Verdabelle Plank Miller Fund
- Dr. Donald E. Mills Fund
- Milton C. & Mary Louise Oakes Fund
- Katherine L. Parker Fund
- Catherine L. Rall Fund
- Edna K. Rex Fund
- Jane W. & John Bradley Rhind Fund
- Richland Gives Day of Giving**
- Betty Diesler Risser Fund
- John & Dell Robinson Family Fund
- Margaret Hay Russell Fund
- Jean U. & George V. Sauter Fund
- Esther Fickes Shaffer Fund
- Thomas A. & Clara H. Siegenthaler Fund
- Mary C. Slabaugh Fund
- Walter C. Stevens Family Fund
- Mary Mead Sturges & Robert Sturges Memorial Fund
- Alan P. Tappan Fund
- Heloise H. Tappan Memorial Fund
- Paul R. Tappan Fund
- W. Richard Tappan Fund
- Pauline S. Treisch Fund
- Charles R. Underhill Fund
- Mary L. Ward Fund
- Mary S. Wilsdon Fund
- Marion Draffan Wisdom Fund
- Charles G. Young Family Fund
- F. Wayne & Isabel Bogan Young Fund

Mansfield Police Department Detective Matthew Loughman shows off one of the new bicycles purchased with a \$10,000 grant. The MPD is reintroducing its bicycle patrol unit to promote greater visibility and more contact between the police officers and citizens.

Jill Montgomery, Richland Bank branch manager, attributes some of her success to a scholarship provided by the Richland County Foundation. She earned two associate's degrees from North Central State College.

Right: Summer programs for children are supported through foundation grants.

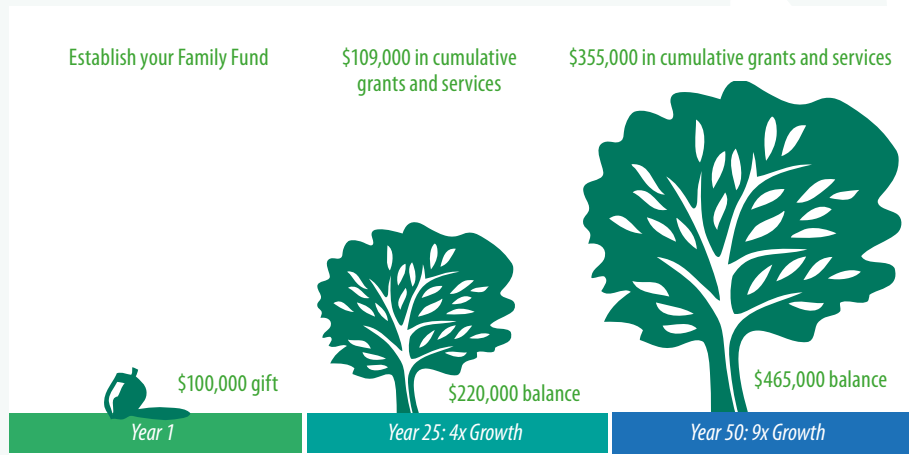


field of interest

- George W. Blymyer Fund
- Henry A. & Melissa J. Booth Memorial Fund
- Child Care Choices Fund
- Emeline Fate Christian Memorial Fund
- Peter S. Clark Memorial Fund
- Scott F. Coffin Fund
- Connections Fund
- Consolidated Individual Assistance Fund
- Lillian R. Dickson Fund
- Dean & Eleanor H. Eckert Fund
- Frances Fern Ecki Fund
- Richard David Gardner Fund
- Richard R. & Veda J. Gardner Fund
- Guy T. Goodman Trust Fund
- Charlotte B. Gugler Fund
- James H. Hoffman Fund
- James A. Jones, MD Memorial Fund
- Helen Kaufman Fund
- Land Preservation Fund for Richland County
- Ralph C. Lutz Fund
- A. Robert & Eve Matthews Fund
- Barbara A. Mau Field of Interest Fund**
- Michael Robert McBride Memorial Fund
- Harry & Lois McCulloch Fund**
- Eleanor Searle McCollum Teacher & Education Fund
- Leona M. Miles Funds
- Verdabelle Plank Miller Fund
- Mid Ohio Drug Prevention Coalition Fund**
- Mary J. Poticny Fund
- Earl J. & Carlie Leona Muth Memorial Fund

- Scattergood Fund
- Katharine McIntyre Shaffer Fund
- Howard & Majoria S. Smith-Bellville
- Community Trust Fund
- Smokeless America Fun Foundation Fund
- Ethel Mayer Southeast Community Fund
- The Store Fund
- Summertime Kids Fund
- Robert J. & Stella F. Sutter Fund
- Heloise H. Tappan Estate Fund
- Paul R. Tappan Fund
- Teacher Assistance Program Fund
- Sarah B. Thomas Fund
- Voegele-Bahl Endowment Fund
- Ed Wadman Scleroderma Research Fund
- Ralph O. & Sarah L. Wise Fund
- Women's Fund
- Fund for Young Children with ALD

Field of Interest Funds allow our donors the opportunity to support specific interests within a broad area such as children's programs, the arts, education, the elderly, or health services.



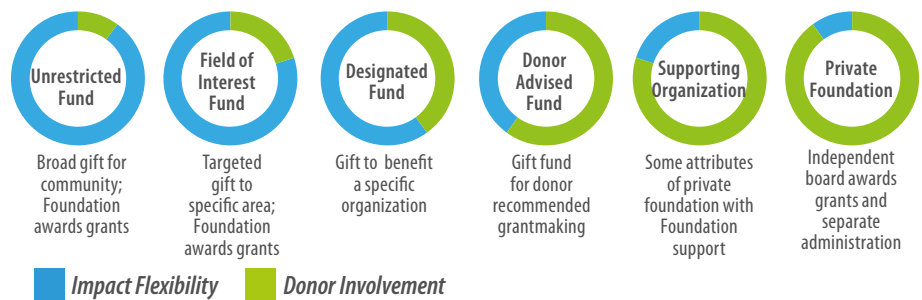


donor advised

Donor Advised Funds allow the donor the opportunity to make grant suggestions to their favorite charities during their lifetime, and are an attractive alternative to a private foundation, offering the same benefits without the responsibility and cost of administration.

- Betty J. Adair Fund
- Charles V. & Constance D. Adair Fund
- P.K. Athmaram, MD Fund
- Hejjaji & P.K. Athmaram, MD Fund
- Paul H. & Susan Gallagher Bailey Fund
- Wilbur G. & Esther L. Beer Fund
- F. Loyal & Judith B. Bemiller Fund
- Donald S. & Clara Louise Black Fund
- Dr. & Mrs. Stanley L. Brody Fund
- Shelby Cooper Memorial Fund
- DeLaney Family Fund
- James Fanello Fund
- Carl & Annamarie Fernyak Fund
- C. Eugene & Sara A. Goin Fund
- Gorman Fund
- John P. Gross Family Fund
- Mariann S. & Avery C. Hand Family Fund
- Hansen Fund for Women & Girls, The
- Jennette C. Hartman Fund
- Fred B. & Marian J. Hout Fund
- Dr. J. Bruce & Nancy L. Jackson Fund
- Kaufman Family Fund
- Barbara & George H. Keyser Fund
- Konstam Family Fund
- Mansfield Civitan Club Fund
- Justin & Lynn Marotta Fund**
- Betty L. & Joseph E. Massa Fund
- Eleanor McCollum Foundation Fund
- Annette L. McCormick Fund for the Environment
- George A. & Olive L. Miller Fund
- Miller/Pattillo Memorial Fund
- MT Business Technologies Community Fund
- Northwest Community Fund
- Dell M. Robinson Fund
- Grace S. & Joe R. Roby Fund
- Rotary Club of Mansfield - Tom Doty Community Fund
- Fran & Warren Rupp Advised Fund
- Sandy Cross Donor Advised Fund**
- Alice B. & Allen M. Sanford Fund
- Ann Hartman Schettler Fund
- David E. & Theresa E. Siebold Fund
- Shelby Home & Public Health Endowment Fund
- Richard & Lorraine Shrilla Fund
- Pamela H. & Thomas R. Siegenthaler Fund
- Matthew P. & Linda H. Smith Fund
- Wray C. & Janet B. Smith Fund
- Christopher Mark Stull Fund
- Richard G. & Helen Taylor Fund
- Thomas Family Fund
- Warner-Kafer Family Fund
- Marion Draffan Wisdom Fund

Charitable Fund Options



The Chiudioni Memorial Fund was established for the purpose of the Mansfield Symphony Youth Orchestra (MSYO) at the Renaissance Theatre. An annual award will be given to one deserving student who shows the following qualities Ettore Chiudioni valued: faithful attendance and dedication to the Mansfield Symphony Youth Orchestra, a positive attitude and ability to connect with peers as well as being an enthusiastic student and player.

Third Street Family Health Services expanded its services in Shelby with a primary medical care, dental and mental/behavioral health office on Main Street. A grant assisted with the building renovations. Nurse Practitioner David Etzel and Dr. Dipali Desai provide primary care to low-income residents.



donor designated

Alzheimer's Association of NCO
Endowment Fund
John F. & Elizabeth W. Bissman Fund
Raymond & Bessie Bixler Memorial Fund
Esther M. Black Fund
Betty J. Blackstone Fund
Thomas C. & Virginia A. Blizzard Fund
Boy Scouts of America Endowment Fund
John S. & Laura Barr Brant Fund
Betty Butler Fund
Chiudioni Memorial Fund
Clear Fork Valley Foundation Fund
Rex E. & Marjorie Sue Collins Fund
Croghan Family Fund for Renaissance
Performing Arts
Croghan Family Fund for Richland Academy
Mary E. Delp Fund
**Downtown Mansfield Inc. Brickyard
Maintenance Fund**
Finefrock Memorial Fund
First Congregational Church of Mansfield, OH
Permanent Endowment Fund
Founders Fund
Forrest W. Freeman, MD & Florence J.
Freeman Fund
Gerald F. Futtly Fund
Richard R. & Veda J. Gardner Fund
Earl H. Goetz Memorial Fund
Earl H. Goetz Fund in Honor of Major McGowan
Earl H. Goetz Fund in Honor of Vern Stover
James H. Hoffman Fund
Frances H. Houston Memorial Fund
Fred B. Hout Memorial Fund
David E. Hughes Fund
Keyser Library Fund
Jessamine L. Lewis Fund

Lucas Local Schools Sustaining Fund
Esther G. Lutz Fund
Floyd H. Lutz Fund
Ralph C. Lutz Fund
Ruth E. Lutz Fund
Mansfield Art Center Endowment Fund
Mansfield University Foundation
Endowment Fund
William & Katherine Jane
McCarrick Fund
McGowan Courage Awards Fund
John A. & Florence B. Mintz Fund
Arthur W. Negin Memorial Fund
Katherine M. Norem Fund
North End Community Improvement
Collaborative Inc. Fund
Milton C. & Mary Louise Oakes Fund
Gertrude M. Odson Fund
Ohio Genealogical Library Endowment Fund
OSU/NCTC Photo Arts Fund
Rowland & Delight Patricia Poth Fund
Rainbow's End Christian Center Fund
in Memory of Elizabeth Copp
Renaissance Performing Arts Assoc. Inc. Fund
Roby Family Fund
Eleanor S. & Stanley J. Ryckman Music
Endowment Fund
Alice B. Sanford Memorial Fund
Marian L. Stauffer Fund
Third Street Family Health Services
Endowment Fund
Turley Raemelon Scholarship Fund
Betty Thompson Wagner Memorial Fund
Dr. Rebecca Sue Wappner Memorial
Scholarship Fund
Charles G. Young Family Fund

Donor Designated Funds allow donors the opportunity to provide annual support to specific charities of their choice.



The Richland County Foundation has the unique ability to hold assets for a charitable organization in a named endowment fund, and annually distribute investment earnings back to the nonprofit organization to meet their needs as they determine. Agency Funds may or may not be endowed. Anyone who wants to support one of the established agency endowment funds may contribute simply by naming the fund on the memo line of their check.

Agency Funds offer nonprofits the opportunity to build an endowment which may support or provide an annual revenue stream for the overall operations of the organization. Organizations not only benefit from this additional revenue but also from the Foundation's financial stability and integrity that assures their donors that their gifts will be prudently managed.

Carrousel Community Trust Fund
 Center for Individual and Family Services, Inc. Endowment Fund
 Children's Theatre Foundation, Inc. Endowment Fund
 Discovery School Endowment Fund
 First Presbyterian Church (U.S.A.), Mansfield, Ohio Endowment Fund
 Hospice of North Central Ohio Endowment Fund
 Mansfield Area Y Endowment Fund
 Mansfield Cancer Foundation Endowment Fund
 Mansfield Fine Arts Guild, Inc. Endowment Fund
 Mansfield Playhouse Endowment Fund
 Mansfield Symphony Society Endowment Fund
 Mohican School in the Out-of-Doors Endowment Fund
 North Central Technical College (N.C.T.C.) Foundation Endowment Fund

Ohio Bird Sanctuary Endowment Fund
 Ontario Public Schools Technology Fund B
 OSU-Mansfield Business Program Endowment Fund
 OSU-Mansfield Faculty Development Endowment Fund
 OSU-Mansfield Scholarship Endowment Fund
 Pioneer Career & Technology Center Fund A
 Rehab Center Endowment Fund
 Richland Academy Endowment Fund
 Richland County Historical Society Endowment Fund
 Richland Newhope Center Fund
 United Way of Richland County Endowment Fund
 YWCA of Mansfield Endowment Fund

Agency Designated Funds are not endowed funds, so the nonprofit may use the principal of the fund. Like the Agency Endowment funds, these funds support or provide an annual revenue stream for the overall operations of the organization.

Community Action for Capable Youth
 Friendly House Association Capital Fund
 Kingwood Center Fund
 Malabar Farm Foundation Fund
 Mansfield City Public Schools Fund
 Mansfield City Schools Fine Arts Fund
 Ontario Public Schools Technology Fund A
 Pioneer Career and Technology Center Equipment and Technology Fund B

Richland County Historical Society Fund "B"
 Richland Newhope Industries Fund
 Richland Newhope Fund II
 Salvation Army Fund
 University Club Educational Foundation Scholarship Fund

More than \$388,000 was awarded in scholarships to undergraduate students who demonstrated a financial need in 2015.



Scholarship

Frank & Bee Ackard Memorial Fund
 Banks-Willeke-Bunfill Scholarship Fund
 Robert G. & Mary Nell Beer Scholarship Fund
 Meg Black Memorial Scholarship Fund
 Black Women United Scholarship for Success Fund
 Thomas C. & Virginia A. Blizzard Fund
 Joseph T. "Jep" Bloor Memorial Scholarship Fund
 Mary Jane Bolus Scholarship Fund
 Emily Campbell Brown & Charles Gailey
 Brown "First Generation to College" Fund
 Karyne & Joe Carey Scholarship Fund
 Mary & Maxton Case Fund
 Children's Theatre Foundation, Inc. Endowment Fund
 James H. Clements II Memorial Scholarship Fund
 Consolidated Scholarship Fund
 Cornerstone Freewill Baptist Church Scholarship Fund
 Davidson Scholarship Fund
 Tim Davis, Jr. Scholarship Fund
 Shelley Dees Memorial Fund
 Dean A. & Eleanor H. Eckert Fund
 Marilyn J. & David P. Eckstein Memorial Scholarship Fund
 Joseph W. Elrod Scholarship Fund
 Miriam & Russell Ferrell Scholarship Fund
 M.I. & Feenie Fillweber Scholarship Fund
 Mark S. Fisher Memorial Scholarship Fund
 George & Pam Fonseca Scholarship Fund
 Phil Ford Scholar Athlete Scholarship Fund
 S.N. & Ada Ford Scholarship Fund
 Diane L. Gibson Memorial Scholarship Fund
 Earl H. Goetz Fund in Honor of Major McGowan
 Earl H. Goetz Fund in Honor of Vern Stover
Eugene & Ruth Oestreich Harsch Scholarship Fund
 Charles H. & Dorothy B. Hickox Memorial Scholarship Fund
 Ocie Hill Scholarship Fund
 Betty J. Horner Scholarship Fund
 Susan L. Jaynes Memorial Scholarship Fund
 Monica M. Kaye Memorial Fund
 Mary M. Kowalchik Scholarship Fund
 Lexington Alumni Association Scholarship Fund
 Lexington Kiwanis Club Scholarship Fund

Licensed Practical Nurse Assoc. of Ohio, Division #5
 Scholarship Fund
 Reggie Luby Scholarship Fund
 Ruth E. Lutz Fund
 Mansfield Noon Lions Club Scholarship Fund
 Eleanor Searle McCollum Scholarship Fund
 Nancy McConnell Special Education Scholarship Fund
 David S. McVicker Scholarship Fund
 John L. Morley Memorial Scholarship Fund
 Ontario Alumni Assoc. Scholarship Fund
 Helen Keating Ott Library Scholarship Fund
 Richland County Medical Auxiliary Scholarship Fund
 Richard David Ronk Memorial Scholarship Fund
 Grace S. & Joe R. Roby Scholarship Fund
 Roby Family Fund
 Fran & Warren Rupp Scholarship Fund
 Eleanor S. Ryckman Memorial Scholarship Fund
 Paul & Adelyn Shumaker Fund
 A. Richard Stofer Scholarship Fund
 Dorris C. Stofer Scholarship Fund
 Donald F. Thompson Fund
 Frederick L. & Harriett S. Tracy Scholarship Fund
 Richard & Sally Uhde STEM Scholarship Fund
 University & College Access Network Scholarship Fund
 University Club Educational Foundation-
 James P. Weldon Memorial Scholarship Fund
 Gregory VanScyoc Memorial Scholarship Fund
 Helen S. Weldon Scholarship Fund
 James P. Weldon Scholarship Fund
 William M. Weldon Scholarship Fund
 Walter W. Willis Rotary Scholarship Fund
 Marilyn A. Wilson Scholarship Fund
 Ashley Yetzer Memorial Scholarship Fund
 Yuncker Memorial Fund

Scholarship Funds allow donors to specify certain fields of study, specific high schools and/or specific colleges that students may attend. Donors may establish a fund with a minimum of \$20,000 which may be in honor or memory of a loved one.



Foundation Fellows

Visionary Fellowships (\$5,000 and up)

Naomi J. Albers*
 Donald N. Beddard*, MD
 (by friends)
 Frank T. Black Foundation
 Joseph J. Fackler*
 Ralph E. Minich
 Ruth M. Newman*
 (by Dr. William C. Newman)
 Dr. William C. Newman
 Carl E. Pfeifer
 Norma E. Pfeifer
 G. Stanford Schneider
 Shafer Valve Company
 Michael Wilging*
 (by Bruce & Sondra Wilging)

Legacy Fellowships (\$2,500 or more)

Raymond Bacquet*
 (by family & friends)
 James E. Bierly*
 (by family & friends)
 Dan Burns*
 (by friends & associates)
 Douglas C. Freer*
 (by family & friends)
 Larry L. Gibson, MD
 Eleanor Homesley*
 Joan W. Meese*
 (by family & friends)
 Mo Minich* (by Ralph E. Minich)
 Joyce M. Walters
 Richard M. Walters

Fellowships (\$1,000 or more)

Dr. Richard E. Adams*
 (by William and Kathleen Hurdle)
 Ivy L. Amos
 Helen Anderson
 Sina Baughman Applegate*
 (by Clare E. Applegate)

Sharon L. Arnett
 Aten & Mennetti
 Insurance Agency
 Betty Bacquet*
 (by Meredith N. Stevens)
 Margaret G. Balyeat*
 (by children)
 Dr. Donald N. Beddard
 Charma Behnke
 Craig Behnke
 Eric Behnke
 Heather Behnke
 F. Andrew Black
 Thomas C. Black*
 (by F. Andrew Black)
 Donald C. Blasius*
 (by friends & former
 Tappan company associates)
 Daniel L. Blay
 (by Joanne H. Blay)
 Dr. Joseph J. Bocka
 Dr. Louis Jeremy Brown*
 (by Alice Sanford)
 William A. Calhoun*
 (by family and friends)
 Samuel H. Campbell
 Clara I. Carew*
 (by John H. Carew)
 John H. Carew
 Dan R. Carmichael
 David L. Carto
 Louise Allison Carto*
 (by family & friends)
 Willis Frank Carto*
 (by family & friends)
 Frances Christian
 (by Miles Christian)
 Miles Christian
 Helene H. Christiansen
 Judge Richard M. Christiansen
 Matthew B. Cockley*
 (by Macky Cockley)
 Marjorie Sue Collins
 Rex E. Collins

John W. Cook, Jr.
 Judith A. Croghan
 Thomas H. Croghan, MD
 John O. Crouse*
 (by Hugh W. Crouse, II)
 Nancie K. Cummins
 (by Richard S. Cummins)
 Otis M. Cummins, III
 James D. Curry, MD
 Garry Davidson
 Aaron Davis
 Suzanne C. Davis
 Earle J. Deems
 G. E. (Dottie) Deems*
 (by Earle J. Deems)
 Ann J. Deley* (by Altrusa
 International of Mansfield)
 Thomas A. Depler
 Robert H. Enskat
 Katherine N. Fernyak
 Pamela S. Fleming
 William E. Flinn*
 (by Dorothy B. Flinn)
 Gayle Gorman Freeman
 (by General Richard Green)
 France B. Gaubatz
Nick Gesouras
 Judith Gibson
 Earl H. Goetz
 Carl B. Gibson*
 (by Dr. David M. Gibson)
 Dr. David M. Gibson
 Marie L. Gibson*
 (by Dr. David M. Gibson)
 Steve Goldman*
 (by Bill & Carol Goldman)
 James C. Gorman
 Jeffrey S. Gorman
 Michele S. Gorman
 William Grogoza*
 (by family & friends)
 John P. Gross (by Draffan family)
Bradford S. Groves

Henrietta M. Hainer*
 (by Elizabeth H. Prestel)
 W.R. Hainer*
 (by Elizabeth H. Prestel)
 Mariann S. Hand
 Ruth Oestreich Harsch*
 (by Eugene C. Harsch)
 Albert W. Hartman*
 (by family and friends)
 Jill Hand Hautzenroeder
 Jon Hautzenroeder
 Frederick R. Heifner*
 (by family and friends)
 Geneva C. Heifner*
 (by Pamela H. Siegenthaler)
 Oliver P. Heller*
 (by family and friends)
 James D. Henson
 Pricilla W. Herbert
 C. J. Hire
 Phyllis F. Hire
 Becky Hoffman (by Dr. William
 C. & Ruth Newman)
 Ed Hoffman (by Dr. William C. &
 Ruth Newman)
 Fred B. Hout
 Edith B. Humphrey
 John J. Kastelic
 Margaret E. Kay
 (by Thomas Kay)
 James W. Kehoe
 George H. Keyser*
 (by Barbara Keyser)
 Ann L. Konstam
 Janice L. Kuhn
 Marion W. Lederer*
 (by Robert W. Lederer)
 Robert L. Lee
 Timothy L. Lehman
 David Letizia
 (by Pete & Susan Bailey)
 Daniel K. Lichtenstein*
 (by Sally S. Lichtenstein)

Benefits of Being a Fellow:

- Involvement in a respected program of community philanthropy
- Participating in a growing endowment of unrestricted funds to improve the quality of life in Richland County
- Sharing the vision of the men and women who founded Richland County Foundation

The Fellowship Program, created in 1991, recognizes gifts of \$1,000 to the Foundation's Unrestricted Funds. A Donor may become a Fellow by making an outright gift of \$1,000 or more; or may make a series of smaller contributions over a period of time.

L.O.L.'s
(by Thomas & Margaret Kay)
Robert E. Mabee
Mansfield Assemblies
A. Robert Matthews
E. William McCarrick
James McCormick*
(by Nanciann McCormick)
Nanciann McCormick
Pauline Keller McKinney*
(by Barbara Keller Lederer)
Betty L. Massa
E. Tom Mattox
Joan Watson Meese
Robert B. Meese
Leona M. Miles
National City Bank
Ohio Horsemen's Council,
Richland County Chapter
Ray Piar
David Pollock (by Jack Pollock)
David Pollock*
(by family & friends)
Delight Patricia Poth*
(by Dr. James Jones)
Burton L. Preston
(by Prudence Preston)
Burton R. Preston
W. Lee Preston
(by Burton Preston)
John Bradley Rhind
Betty D. (Bets) Risser
Dell M. Robinson
(by John Robinson)
John Robinson
Joe R. Roby
John S. Roby
Joan G. Ross
(by W. Thomas Ross)
Allen M. Sanford
Irene McCanne Sanford*
(by Allen M. & Henry M.
Sanford)

Henry B. Sanford* (by Allen M.
& Henry M. Sanford)
Jean U. Sauter
Rev. Clifford Schutjer
Patricia Schutjer, PhD
Angela Scurci
Kyle Evan Shaw* (by Douglas &
Judith Brunk)
Charles Patrick Siegenthaler*
(by Sally S. Lichtenstein)
C. Peter Siegenthaler
(by Sally S. Lichtenstein)
Mary Mead Siegenthaler
(by Sally S. Lichtenstein)
Clara H. Siegenthaler
John H. Siegenthaler
Pamela H. Siegenthaler
Thomas A. Siegenthaler
Thomas A. Siegenthaler*
(by family and friends)
Thomas R. Siegenthaler
Peter A. Sminchak*
(by family & friends)
Janet B. Nicely Smith
(by Rev. Wray C. Smith, D.D.)
Rev. Wray C. Smith, D.D.
(by Janet B. Nicely Smith)
Gary Stroup
David J. Strub
Richard G. Taylor
U of M/OSU (by F. Loyal Bemiller
& O.M. Cummins, III)
Michael Vucelic
(by Inge S. Vucelic, Ph.D.)
Martha A. Walter
(by Richard L. Walter)
Richard L. Walter
Jean E. Welge
Merris A. Welge, Jr.
John W. Welsh
Betty E. Wells
Fred J. Wiecher, MD
Doris Williams
J. George Williams

* Contributed in Memorium

Bold Type indicates new Fellowship or new level of contribution in 2015

The Legacy Society

The Legacy Society was established by the Board of Trustees in the year 2000 to recognize individuals during their lifetime who have made plans to leave a gift to this community in partnership with the Richland County Foundation. This gift may be through their estate plans, written in their will, including the Foundation as a future beneficiary of their IRA, insurance policy, remainder trust, or other similar planned gift.

The Richland County Foundation acknowledges the following generous people who have planned a legacy to their community through gifts that will eventually come to the Foundation for the benefit of others.

Dr. Charles & Constance Adair
Ronald L. & Janeen* W. Adams
Pete H. & Susan Gallagher Bailey
Bob & Natalie Beckert
Vin & Jo Black
Billie Brandon, JD
Candice Chaffee
Walter Chaffee
David & Julia Crawford
Dr. James & Joyce Curry
Bob* and Esther Fry
William G. Hailey
John F. and Lin H.* Harkness
Linda A. Hering
Carol S. Kautz
Thomas R. and Margaret* Kay
Dr. Joel Kaye
Marjorie Kieffer
Dan & Barbara McBride
Everett W. & Beverly Miller
Richard H. Otto
Stephen M. Shoup
Robert & Margaret Soulen
Judith E. Stroup
Robert* & Stella Sutter
Ralph & Martha Turley
Larry & Jean VonBlon
Marion Draffan Wisdom

* Deceased

Bold type indicate new donor



Benefactors \$5,000 or more

Helen Anderson
 Eleanor Beagle*
 (by Nancy L. Jackson)
 Elizabeth M. Black
 Elizabeth T. Black
 Elizabeth T. Black* (by Frank
 T. Black Family Foundation)
 Constance F. Brody, PhD
 Joan H. Brown*
 (by John T. Brown)
 Candice Chaffee
 Mary Jane Cress
 Katherine N. Fernyak
 Carol R. Goldman
 The Hansen Fund
 Hazel R. Hansen
 Phyllis F. Hire
 Betty J. Horner
 Edith B. Humphrey
 Nancy L. Jackson
 Margaret Kay*
 (by Thomas R. Kay)
 Barbara A. Keyser
 Marjorie M. Kieffer
 Barbara Lederer*
 Betty L. Massa*
 (by Mark Berno)
 Mechanics Savings Bank
 Richland Bank
 Salli S. Rohm
 Pamela H. Siegenthaler
 Elizabeth L. Smith
 Linda H. Smith
 Matthew P. Smith
 Ottelia B. Stoodt*
 (by Salli Rohm)
 Carol B. Taylor
 Helen Taylor
 YMCA 1976 Girls Swim Team

Patrons \$2,500 or more

Betty J. Adair
 Pat Addeo
 Dorothy Durham
 Ashbaugh* (by Sara A. Goin)
 Elsie May Hobday Ashbaugh*
 (by Sara Goin)
 Elizabeth T. Black*
 (by Elizabeth M. Black)
 Mary K. Bolin
 Joan H. Brown
Carol Chambers
 Fran Christian*
 (by Helen Taylor)
 Portia Cummins Carto*
 (by Elizabeth M. Black)
 Portia Cummins Carto*
 (by O.M. Cummins III,
 Sara L. Cummins, &
 Suzanne C. Davis)
 Suzanne C. Davis
 Patricia DeCenso
 Susan Duncan Gentille
 Judith Gibson
 Miriam T. Gilbert
 Sara A. Goin
 Meredith Rae Haber*
 (by Rebecca A. Smith)
 Alberta Harber
 (by Arlene Senser)

Margaret Harrison
 (by Helen Taylor)
 Donna Hartnett*
 (by friends & family)
 Jill Hand Hautzenroeder
 Janet E. Wobbecke Hudson
 Key Foundation
 Virginia D. Kirkwood
 Margaret A. Lindley
 Manairco Employees (by
 Gayle Gorman Freeman)
 Mansfield Dental Auxiliary
 Pearl Neer Plank* (by
 Verdabelle P. Miller)
 Lydia J. Reid
 Mary L. Riedl
 Suzanne Schamadan
 Lillian Senser*
 (by Arlene Senser)
 Janet B. Nicely Smith
 The Helen Taylor Family
 Frances K. Welsh
 Janene Ann Yeater

**10th Year Anniversary
 Founders-\$1000 in 2006**

Lucy A. Amsbaugh
 Mary Jo Black
 Leah Humphrey Blay
 (by Joanne Blay)
 Mary Jane Cress
 Steven O. Cummins and
 Karen Redfearn
 Lois C. Flinn* (by friends)
 Miriam E. Gilbert
 (By Miriam T. Gilbert)
 Anna Mae Jones*
 (by Mary Lou Herrold)
 Deborah M. Schenk
 Pamela H. Siegenthaler
 (by Geneva S. Cummins &
 Claire Proto)

**Founders \$1,000 by
 Dec. 31 1997**

Jeanne Alexander
 Mary E. R. Alletto
 Anonymous Donor
 Kristin Arnold
 P. K. Athmaram, MD
 Susan G. Bailey
 Cynthia Baker
 Michelle K. Ballinger
 Mary Ellen Barr* (by Carol
 Brown & Kathleen Mehl)
 Helen Bartlett
 Marianna Basting
 Janice Beddard
 Charma Behnke
 Cindy Biggs
 Mary Jo Black
 Elizabeth H. Blay
 (by Daniel L. Blay)
 Joanne H. Blay
 Maggie Bolin
 (by James R. Bolin)
 Billie Brandon, JD
 Emily Campbell Brown
 Clarita L. Burton
 Fran H. Christian
 Virginia Clay, PhD

Clare Duncan Clemens
 Geneva S. Cummins
 Sara L. Cummins
 Joyce A. Curry
 Diane M. Daniels
 Ann Drake
 Rose Ann Dunn
 JoAnn E. Dutton*
 (by Joseph Dutton)
 Ellen Eckert
 Deborah A. Exten
 Erin B. Fain, MD
 Susan E. Fain
 (by Erin B. Fain, MD)
 Shelly E. Fisher
 Pamela S. Fleming
 Celia J. Flinn, MD
 Gayle Gorman Freeman
 Harriett Freeman
 (by Linda H. Smith)
 Peggy Jean Fry*
 (by Constance Ament)
 Veda J. Gardner
 Frances B. Gaubatz
 Julie A. Giunti*
 (by Laurie A. McKeon)
 Catherine D. Goldman
 Joetta Goodman
 Harriet Steele Keating
 Harbage* (Karen K. Bierly)
 Linda Haring
 Geneva C. Heifner* (by
 Pamela H. Siegenthaler)
 Laurie Hickox, DVM
 Barbara J. Huston
 Charla A. Irvin
 Margaret M. Joyce
 Linda Kafer, PhD
 Julie Kleshinski
 Vicki Kolb
 Shannon S. Lang
 Karin Fleming Manning
 Elizabeth F. Marquardt
 Betty L. Massa
 Jane McKean
 Jeanne Meisse
 Jane Meyer
 Henry P. & Marjory L.
 Michaels* (by Carol
 Michaels)
 Shirley Monica
 Judy & Larry Pabst
 Sophie Crittenden Polhemus
 Claire Siegenthlaer Proto
 Betty D. Risser
 Jane A. Risser
 Julia Rohles
 Alice B. Sanford
 Dell M. Robinson Sanford
 Deborah M. Schenk
 Arlene Senser
 Clara H. Siegenthaler
 Benjamin D. Smith
 Christopher M. Smith
 Elizabeth L. Smith (by
 Benjamin, Christopher, &
 Lauren Smith)
 Lauren Z. Smith
 Cassandra Stein
 Sally Stevens
 Catherine K. Stout

Zoe M. Swain
 Marcine Taylor
 Lynn E. Humphrey Timmons
 Heather, Melissa, & Susan
 Tsavaris
 Cindy Kalinoff Watson
 Anne C. Wendling
 Suzanne S. Wilson

**Advocates \$1,000 since
 Jan. 1, 1998**

Deborah L. Adams
 Altrusa International, Inc. of
 Mansfield
 Ivy Amos
 John B. Black*
 (by Jane A. Risser)
 F. Andrew Black
Martha Jane Black
 Claire Blay
 (by Joanne & Dan Blay)
 Glenna Cannon
 Paula Cohen
 Teresa Cooperider
 Bambi Couch Page
 Emma Lousie Cummins
 (by Geneva S. Cummins)
 Nancie Cummins
 Barbara Cuning
Gwen Cunningham
**(by Dr. & Mrs. Andrew
 Fahmy)**
 Rees Davis*
 (by family & friends)
 Suzanne C. Davis
 (by Elizabeth M. Black)
Yvette Fahmy
**(by Dr. & Mrs.
 Andrew Fahmy)**
 Kay Fathe* (by Helen Taylor)
 Annmarie Fernyak
 (by Katherine N. Fernyak)
 Stephanie Fernyak, Dr.
 (by Katherine N. Fernyak)
 Susan E. Fernyak, MD
 (by Susan E. Fernyak &
 Katherine N. Fernyak)
 Marcy Sweda Flinn*
 (by Celia J. Flinn, MD)
 Pamela Fonseca
 Alice A. Frazier
 Harriett Freeman
 Esther M. Fry
 General Motors-
 Mansfield Plant
 Sandra Gibbons
 Bernice Goldman*
 (by Bill & Carol Goldman)
 Mariann S. Hand
 Edward Hansen (by Sandy
 Gibbons & Hazel R. Hansen)
 Alta J. Hartman*
 (by Maxine Smith)
Amy Hockett
 Catherine Anders Huff*
 (by Barbara McBride)
 Lisa & Scott Humphrey
 Hilda Johnson*
 (by Betty J. Adair)
 Nancy Joyce

Mary Jo Hull
 (by Helen Taylor)
 James W. Kehoe
 (by Shelby Foundation)
 Terry B. Kehoe
 (by Shelby Foundation)
Pauline Keller
(by Robert W. Lederer)
 Nancy Kolb
 Ann L. Konstam
 Jane Ann Korol*
 (by Stanley Korol)
Marion W. Lederer,
(by Robert W. Lederer)
 Martha Ellen Stahl Lenhart
 (by LaDonna J. O'Neal)
 LTV Copperweld
 Marilou Marshall
 Marilyn McCready
 Pauline Keller McKinney*
 (by Barbara Lederer)
 MedCentral Employee
 Civic Fund
 Carol Melchior
 Mary Moloney*
 (by Jane McKean)
 Gabriella Morando*
 (by Jim & Elizabeth Morando)
 Agnes E. Moritz*
 (by Fred Moritz)
 Katherine Norem*
 (by Katherine N. Fernyak)
 Georgia Kelly Nosker
 (by Judith Croghan)
 Cynthia B. O'Neal
 Jane K. O'Neal* (by William &
 Ladonna O'Neal)
 Rani Piar
 Norma E. Pfeifer*
 (by Carl E. Pfeifer)
 Mary Kay Ransdell
 Cynthia M. Roby
 Kristen C. Rohm
 (by Salli Rohm)
 Gretchen Rohm-Ensing
 (by Salli Rohm)
 Bonita Ronk
 Kim J. Ronk (by Bonita Ronk)
 Carolyn L. Rusteburg
 Nancy Peppard Rupp*
 (by family & friends)
 Christine Schenk*
 (by family & friends)
 Dorothy Correll Smith*
 (by Lucy A. Amsbaugh)
 Martha B. Tawse
 Louise H. Taylor
 Dorothy Van Voorhis*
 (by Sally Workman)
 Karen Rohm Williams
 (by Salli Rohm)
Sally Workman*
(by Bruce Workman)

* Contributed in Memorium

Bold indicates new level of giving



The Women's Fund Advisory Committee includes front row L-R: Susan Gentile, Thelda Dillon, Jeanne Meisse, Carol Chambers, Edie Humphrey, Judie Collins and Sally Gesouras; back row Lynn Fahmy, Kristie Massa, Paula Cohen, Jill Haring and Carolyn Carto.



The Women's Fund of the Richland County Foundation is a permanent endowment and will celebrate its

20th anniversary in 2016. Since its inception, the Women's Fund has awarded close to \$280,000 in grants to local nonprofit agencies and scholarships to non-traditional female undergraduate students.

A person becomes a part of the Women's Fund simply by making a monetary gift; often to celebrate or honor a special woman.

The fund was formed in 1996 to promote philanthropy among women to provide funding to programs and projects that empower women and girls to achieve their full potential.

The Women's Fund grant focus in 2015 was women and girls with a preference for parenting programs. Just over \$10,700 in grants were awarded to the following agencies and programs:

Community Health Access Project/Help Me Grow.

The program works with pregnant and new mothers daily. The grant will fund education and emergency supplies such as diapers and baby wipes.

Parent Aide for the Enriching Foundations for Moms.

This program will help ensure that mothers who seek child abuse prevention supportive help will receive it. The grant will help address the gap in funding and provide women who express a desire for mentorship the ability to be helped and funding to assist with two workshops.

Pioneer Career and Technology Center, Graduation, Reality and Dual Role Skills.

GRADS focuses on knowledge and skills related to prenatal and neonatal care, nurturing healthy children and families and graduation from high school. The grant will fund a field trip to North Central State College to encourage GRADS students to further their education after high school graduation.



The Women's Fund sponsored a series of educational lectures in the community including one presented by North Central State College Director Cheryl Carter at the Urban Center in Mansfield.



Congratulations to JoAnn Dutton Award winner and Women's Fund Advisory Committee Member Jeanne Meisse. The award recognizes volunteer work in the community. It is sponsored by the Women's Fund and was named in honor of JoAnn Dutton, former executive director of the Mansfield YWCA.

Connections

The Connections Fund of the Richland County Foundation awarded three grants focusing on parenting to the following organizations in 2015.

Culliver Reading Center for the “Together We Can” program. It was designed to build positive relationships within the family. A goal of the program was to have parents and guardians more involved in their child’s learning and to connect them to resources and special services as needed.

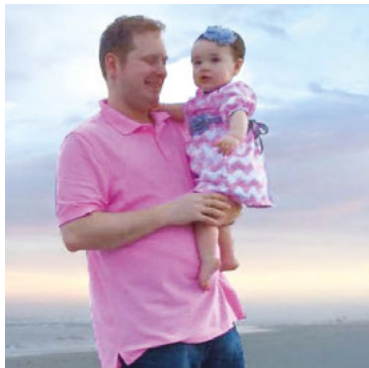
First English Lutheran Church for the “Standing Together Every Parent Succeeds” program. It assisted families with various topics such as parenting, relationships, budgeting, shopping, cooking and family game night.

Richland County Youth and Family Council for “Boot Camp for New Dads.” The program is a unique community-based workshop to inspire and equip fathers to engage with their infant, support their mate and find their way as a new parent.

Each year between \$2,000 and \$11,000 is granted to local nonprofit organizations.

Individuals can join Connections with a \$150 donation and couples for \$250. The membership fee can be paid online at richlandcountyfoundation.org, click the donate button and select the Connections Fund. Or you can pay by check and mail it to 181 South Main Street, Mansfield, 44902.

To foster and retain leaders and professionals in Richland County and to promote a philanthropic identity and involvement in the community.



left: Chris Starkey and his 10-month old daughter, Harper, participated in the Boot Camp for New Dads.

below: The Connections Fund held a Progressive Dinner with a Kentucky Derby theme in downtown Mansfield.



- George & Kelly &ress
- Jeff & Robin Barrett
- Paul & Laurie Boggs
- Brian Breitinger & Amy Staker-Breitinger
- Matt & Trisha Breitinger
- John A. Brown
- John & Alison Burkhart Jr.
- Bruce M. & Geneva Cummins
- Tim & Deb Cusic
- David & Elizabeth Daniels
- Jason & Megan Day
- Scott & Melissa Drozda
- Matt & Jen Dudley
- Rodney & Kimberly Earick
- Dr. Jonathon & Leah Faber
- Drs. Jonathan & Erin Fain
- John & Carrie Fanello
- Mark & Deana Fanello
- Dr. DaleAnne Featheringham
- Carl & Annamarie Fernyak
- Tom & Melissa Fittante
- Scott & Jennifer Foster
- Thomas J. Freund
- Dr. Stephen Gavassi & Shelly Frank
- Nicholas & Sally Gesouras
- Cristen Gilbert
- Jeff & Alana Gillson
- Gayle Gorman Green
- Martha Bickley & Bradford Groves
- Darren & Terri Hamilton
- Cameron Haring
- Jim & Megan Hill
- Tim & Abby Hilterman
- Shane & Holly Hostetler
- Joanne Humphrey
- Joe & Edie Humphrey
- Mr. Bart Ingram
- Mark & Karen Isaac
- Gail Laux
- John & Donna Luedy
- Jason & Andrea Murray
- Jim Nicholson & Dawn Kitchen
- Ken & Amy Parker
- Bob & Erica Parnisari
- John C. Roby
- Rick Roby
- Matt & Rachel Schag
- Brian W. & Krista Schmidt
- Richard & Susan Schuller
- Bryan & Annette Schutjer
- Dan & Shelly Seckel
- John & Maura Siegenthaler
- Thomas R. & Pamela H. Siegenthaler
- Jeremy & Michelle Swank
- Brent Taylor
- Josh & Jennifer Taylor
- Scott Them
- Chelsie A. Thompson
- Christ & Heather Ticoras
- James & Ashley Twedt
- Lawrence W. & Jean L. VonBlon
- Shand & Kristen Wiltanger
- Brett & Cheryl Young



Memorial & Honor Gifts

Laverne M. Airhart
 Dr. Austin Ayars
 Betty Bacquet
 Raymond Bacquet
 Robert T. Barrett
 Enid Black
 Ms. Carol Boals
 Bea Bogner
 Emily Campbell Brown
 Ms. Lori Brumenshenkel
 Pam Burns
 Scott Carpenter
 Frances D. Carto
 Clare D. Clemens
 Paula Cohen
 Jan Conrad
 Ben Contra
 Ms. Cecily Cummins
 Gwen Cunningham
 Deborah Cusic
 Benjamin Czajka
 Jennifer H. Daughterty
 Dexter Davis
 Joyce Deplugh
 Jo Ann Duvall
 Paul Ewing
 Mrs. Yvette Fahmy
 Sharon Fauber
 Annamarie Fernyak
 Christine Fernyak
 Katherine Fernyak
 Dr. Stephanie Fernyak
 Dr. Susan E. Fernyak
 Andrew S. Fisher
 Mark S. Fisher

Robert E. Fisher
 Philip E. Ford
 Rick Ford
 Jacie Foster
 Douglas Freer
 Betty French
 Gerald Futtu
 John W. Gates
 James R. Germany
 Viola Gibson
 Dr. Ronald J. Golbus
 Yong Gold
 Ms. Pat Gordon
 Marjorie N. Gorman
 Ms. Helen Gullen
 Mr. B. Gene Hahn
 Ms. Marjorie P. Hail
 Harriet Harbage
 Alberta Harber
 Ms. Gloria Harkins
 Donna Hartnett
 Herbert Himes
 Amy Hockett
 Jan Holden
 Charles Hunt
 Ms. Michele Hyman
 Bill Jennings
 Sister Jerri
 Ms. Janet Johnson
 Pauline Keller
 Mr. Howard Kinstle
 Barb Kissell
 Gretchen Kohler
 Ms. Linda Lair
 Ms. Windi Lane

Barbara Lederer
 Marion W. Lederer
 Mary Lesseuer
 Jerry Lorentz
 Mansfield Community
 Playhouse
 Lois M. McCullough
 Thelda J. McDermott
 Marth & Josephine
 McFarland
 David S. McVicker
 Robert B. Meese
 Ms. Rose Morando
 Adelle Morley
 Mrs. Katherine Norem
 Elizabeth Olson
 Linda H. Papajcik
 Jim Peck
 Norma E. Pheifer
 Jack Pollock
 Ms. Jamie Pope
 Rev. Kristen C. Rohm
 Gretchen Rohm-Ensing
 Jean U. Sauter
 Ms. Roberta Schaffner
 Mrs. Susan M. Schuller
 Robert L. Seibert
 Lillian Senser
 Tammaie SESCO
 Sondra Siegenthaler
 Adelaide Smith
 Lowell Smith
 Ms. Donna Correll Smith
 Sarah Spearing
 Kelly Spencer

Cayla M. Starlin
 Ottelia B. Stoodt
 Christine Stroup
 Ms. Eva E. Stuckman
 Christopher Stull
 Suzanne Sumner
 Cristine Sutter
 Robert J. Sutter
 Stella Sutter
 Theresa R. Sutter
 Ruth E. Sweval
 Helen Taylor
 Mr. Don Watson
 Frances K. Welsh
 Ms. DeeDee Wessling
 Ms. Jane Wessling
 Bernice Wetherell
 Karen White
 Michael Wilging
 Josephine Williams
 Karen Rohm Williams
 Ms. Julie Wilson
 Sally Workman
 Ethan Wyner
 Ashley N. Yetzer



new gifts

A _____
Ms. Joann B. Ackerman
Patricia Addeo
Ivy L. Amos
Lucy A. Amsbaugh
George & Kelly Andress
William & Laura Anliker
George & Margie Arnold
Linda Arnold
Nathan A. & Amity L.
Arnold

B _____
Tim and Julie Babcock
James A. & Lyn Baker
Bank of America
Charitable Gift Fund
Bank of America
Employee Giving
Campaign
K. Jack and Ann
Bargahiser
Angus W. Barton
Bob & Natalie Beckert
Janice Beddard
Eric & Charma Behnke
Mike & Tina Bennett
Ken & Sherry Berger
Andrea and David
Berliner
Karen Bierly
Big Brothers/Big Sisters
of N. Central Ohio
Marlene Bisel
Martha Jane and
J. Douglas Black
Joel S. & Margaret S.
Black
John Baxter Black Estate
Martha Jane Black
Mary Jo Black
Tom & Dot Blaney
Dr. and Mrs. Joseph J.
Bocka
Roderick H. Bogner
Laurence J. Bollinger
James and Paula
Bonnell
Billie Brandon
Brian Breitinger & Amy
Staker-Breitinger
Michael & Lee Anne
Brock
Charles G. Brown

Daniel & Nancy Brown
John A. Brown
Joyce W. Brown
Robert Brown
Bill & Carol Brown
Buckeye Pumps, Inc.
Bucyrus Precision Tech, Inc.
John & Alison Burkhart Jr.

C _____
Community Action for
Capable Youth
Audrey Carto
David D. & Carolyn M.
Carto
Mary M. Case Trust
Iva-Jean Cavanaugh
Carol Chambers
Michael & Carol
Chambers
Joan Chiudioni
Ms. Lisa Clark
Roger A. Clark
Libby Clever
Paula M. Cohen
Mrs. Ben Contra
Mansfield Richland
County Convention
& Visitors Bureau
Edwin M. & Leah T. Cook
Ms Sharon Cooper
David & Julia Crawford
Croghan Family
Bruce Cummins
Bruce M. & Geneva
Cummins
O.M. Cummins, III
Nancie Cummins
Steven O. Cummins and
Karen L. Redfearn
Mr. Alexander B. Curchin

D _____
Mary Damron
David & Elizabeth
Daniels
Nancy Darbey
Dennis A. & Sandra
Davis
Dennis N. & Polly Davis
Harold H. Davis
Ophinell & Mildred Davis
Polly Davis
Hatcher Day
Jodie Dees

Tom & Nancy Depler
Peter and Janet Dignan
Thelda Dillon
M. Joan Douglass
Phil & Ann Downs
Mrs. Cheryl Dreher
Joanne L. Dressler
Matt & Jen Dudley
William & Penelope
Dunham

E _____
Elliott Machine Works, Inc.
Wilma G. Elliott
William H. Eutzley

F _____
Jonathon & Leah Faber
Dr. & Mrs. Andrew Fahmy
Drs. Jonathan & Erin Fain
Fairfield Homes, Inc. dba
Gorsuch Homes
Margaret Fallerius
James C. Fanello
John & Carrie Fanello
Mark & Deana Fanello
Dr. DaleAnne
Featheringham
Annamarie Fernyak
Carl and Annamarie
Fernyak
John & Katherine
Fernyak
John C. Fernyak
Katherine N. Fernyak
Dr. Susan E. Fernyak
Karl & Shelley Finley
Alma Fisher
Bob & Alma Fisher
Andrew S. Fisher
Jana S. Fisher
Shelley E. Fisher
Tom & Melissa Fittante
Marilyn J. Flanagan
Scott & Jennifer Foster
Alice Fraizer
Sonny & Alice Fraizer
Dr. Gary & Sandra
Freeman
Friends of the Mansfield-
Richland County Public
Library, Inc.
Mary Kay Futtly

G _____
John and Kristin Gable

Ms. Marcia Gagich
Frances B. Gaubatz
Susan Duncan Gentile
The Gerhart Family
Nick Gesouras
Nick & Sally Gesouras
Judy Gibson
Michael Gibson
Cristen Gilbert
Mr. Charles Gleaves
C. Eugene & Sara A. Goin
Linda & Edward Golden
Mr. Mark Goldman
Steve Goldman
Foundation Inc.
The Gorman Rupp
Company
James C. Gorman
Gayle Gorman Green
Jeff and Kay Green
Michael & Angela
Gremmer
Janet A. Grover
Bradford Groves
Martha Bickley &
Bradford Groves

H _____
Charles P. Hahn
Sieglinde Hahn
Darren & Terri Hamilton
Jill Haring
Eugene C. Harsch
Eric and Resa Hennings
Stephany Hepner
Dr. John & Terry
Heringhaus
The Hermit Club
Jim & Megan Hill
Tim & Abby Hilterman
Patsy Himes
Janeen Hire, Jennifer
& Tori Bookwalter and
Rusty & Karen Mabee
Family
Marilyn Hixson
Ms. Karen Hockstad
Ms. Nina J. Holmes
Bradley & Lee Hostetler
Shane & Holly Hostetler
Mary Jo Taylor Hull
Edith B. Humphrey
Joseph E. & Edith B.
Humphrey

Joanne Humphrey
Mrs. Betty Hunt
Kathleen & William
Hurdle
Barbara J. Huston

I _____
John & Linda Ibriks
iHeart Media, Inc.
William C. Ingram, Jr.
Integrity Insurance
Solutions
Mark & Karen Isaac

J _____
Marie Jackson
Nancy L. Jackson
Jamison Well Drilling
Jay Plastics, Inc.
Leah R. Jones
Penny Carpenter Jones

K _____
Ann S. Kania
Carol Kautz
Keith & Debbie Kelley
Janet C. Kerr
Kina A. Kerst
Key Private Bank
Roxanna Kindelsperger
Mitchell V. and Carol E.
Kirkbride
Yolanda Kirschner
Harold and Eunice Klopp
Sylvia Kolonie
Robert & Mary Ann
Konstam
Betty L. Korol
Nick and Mary Lou
Kozimor
The Kroger Company

L _____
Gail Laux
Robert W. Lederer
Marjorie M. Leonard
Leppert Machine Co. Inc.
Lexington Alumni
Association
Lexington Avenue
Offices LLC
Sarah S. Lichtenstein
Mr. Rex W. Linkenbach
LJR Enterprises
Ms. Dee Lorentz
Anne Loucks
Edward T. Loughridge

Mrs. Susan M. Love
 Carol L. Loveless
M _____
 Susan Madura
 Malabar Farm Foundation, Inc.
 Mansfield Hardware and
 Supply Co.
 Justin & Lynn Marotta
 Rose Mary Martin
 Jill S. Massonne
 Mark & Jeannine Masters
 Barbara A. Mau Estate
 David Maxwell
 James & Linda McBride
 Kenneth & Bev McCally
 Mrs. Robin McCullough-Bade
 and Mr. John Bade
 Patricia McGinty
 William McGraw Jr.
 Gary L. & Janet A. McGugin
 Rebecca A. McKinnell
 Ms. Deanna McLeary
 Mechanics Bank
 Edward T. Meehan
 Jane B. Meese
 Dixie G. Mehock
 Gunther Meisse
 Jeanne Meisse
 Mennel Milling Company
 Mid Ohio Drug Prevention
 Coalition
 Marianna Miefert
 Ms. Kimberly Ann Mihan
 Olive L. Miller
 Mr. Thomas A. Miller
 Milliron Foundation
 Ralph E. Minich
 Jim and Elisabeth Morando
 Mr. Thomas R. Morell
 Mr. Zachary J. Motter
 Mount Zion Lutheran Church
 MT Business Technologies, Inc.
 Jana Mulherin
 Jason & Andrea Murray
 James and Vicki Myers
N _____
 Brian Nabors
 Gary A. & Lucy B. Negin
 Fred Nevill
 News Journal
 Ms. Phyllis F. Nicholson
O _____
 Ontario Local Schools

The Ohio State University -
 Mansfield
 Richard Otto & Linda Hering
 Our Club
P _____
 Ken & Amy Parker
 Bob & Erica Parnisari
 John & Joyce Pasheilich
 Nick & Patti Patrick
 John & Nancipat Pcionek
 Pediatric Denistry
 Pepperidge Farm, Inc.
 Carl E. Pfeifer
 Dan and Sue Phallen
 Philomathian Club
 Pineridge Investments, LLC
 Don and Glenna Plotts
 Glenna R. Plotts
 Murl Preble
 Betty E. Preston
 Maureen Prinz
 Rev. Gary L. & Mrs. Faith A.
 Proietti
 Jonathan B. Pulcini
 Mr. Steve Purvis
R _____
 Ms. Rosemary P. Rallo
 Janice and James Reed
 Mark & Pam Reed
 Myron Reed
 Janice B. Remy
 Ronald & Barbara Richards
 Richland Bank
 Richland Carrousel Park, Inc.
 Richland Newhope Industries,
 Inc.
 Richland Source
 Judy Riley
 Robert and Esther Black Family
 Foundation
 Roby Foster Miller & Earick
 Insurance Co.
 Salli Rohm
 Rosenthal Family Foundation
 Thomas & Joan Ross
 Rotary Club of Mansfield
 The Fran & Warren Rupp
 Foundation
 Polly Russo
S _____
 Saint Peter's Cathedral
 Allen M. Sanford
 Ms. Amy Sauder

Matt & Rachel Schag
 Ludwig E. & Deborah M.
 Schenk
 Ann Schmidt
 Brian W. & Krista Schmidt
 G. Stanford Schneider Trust
 Richard & Susan Schuller
 Bryan & Annette Schutjer
 Schwan's Home Service, Inc.
 Seckel Group LTD, AIA
 Nancy Seibert
 Select Sires, Inc.
 Arlene Senser
 Andrew Shiptlet
 Theresa E. Siebold
 John H. Siegenthaler
 Thomas R. and Pamela H.
 Siegenthaler
 Albert J. and Marsha A. Sigg
 Charles T. Sinsabaugh
 David & Kathy Sipes
 Mrs. Sheila Sipes-Jones
 Kurt & Nancy Skarl
 Jan Smith
 Mark C. Smith
 Matthew P. & Linda H. Smith
 Paul & Pam Smith
 Mr. Brad Snyder
 Hannah Snyder
 Snyder Family Trust
 Robert W. & Margaret A. Soulen
 Spherion
 Les A. & Bonita S. Spring
 Darrell & Brenda Starr-Jude
 W. Chandler Stevens
 Larry & Cathy Stimpert
 Mebane Stolfi
 Stoneridge Hi-Stat
 Darrel & Ann Strickler
 Gary R. Stroup
 Mark & Deborah Stull
 Ms. Suzanne Summer
 John & Suzanne Sumner
 Cristine Sutter
 John A. & Theresa R. Sutter
 Rosemary J. Sutter
 Stella Sutter
 Sutton Bank
 Jeremy & Michelle Swank
 Stephen & Kimberly Swank
T _____
 Helen Taylor
 Louise H. Taylor

Maura J. Teynor
 Chelsie A. Thompson
 Dr. and Mrs. Christ Ticoras MD
 Albert Touby
 Dale G. Treace
 Ralph & Martha Turley
 James & Ashley Twedt
U _____
 Richard & Sally Uhde
V _____
 Jon & Jill VanHarlingen
 Lawrence W. & Jean L. VonBlon
W _____
 Dr. Blake D. & Gere C. Wagner, Sr.
 Thomas F. and Karen Wappner
 Allie Watson
 Jone Watson
 Ms. Martha Watson
 Wayne Savings Community
 Bank
 Weithman Rentals, LLC
 Dennis & Lori Welfle
 David, Julia & Reid Welsh
 Bruce & Sondra Wilging
 Christopher (CJ) Wilging
 Doris Williams
 Dr. Edwin C. & Jan Winbigler
 Sherry Winbigler, Michael
 Spayde & Brettley Spayde
 E. Harry & Joan K. Wirstrom
 WMFD TV
 Bruce Workman
Y _____
 John Yatko & Cristine Sutter



RICHLAND COUNTY
FOUNDATION

Donors are the core of our Foundation

OUR DONORS ARE AS VARIED AS THE CHARITIES AND CAUSES THEY SUPPORT.

Richland County Foundation offers a variety of instruments to allow an individual, family or organization to become a donor and realize their charitable dreams. The Foundation works with professional advisors to assist in the charitable process and to create solutions that may offer the maximum in tax advantages as well. An individual may choose to pool their resources with an already existing fund or may wish to establish a new fund.

Fund Options for Donors

- Unrestricted Funds
- Field of Interest Funds
- Designated Funds
- Donor Advised Funds
- Agency Funds
- Scholarship Funds

Other Options

- Fellows of the Foundation
- The Women's Fund
- Connections Fund
- Legacy Society
- Memorial & Honor Gifts

