

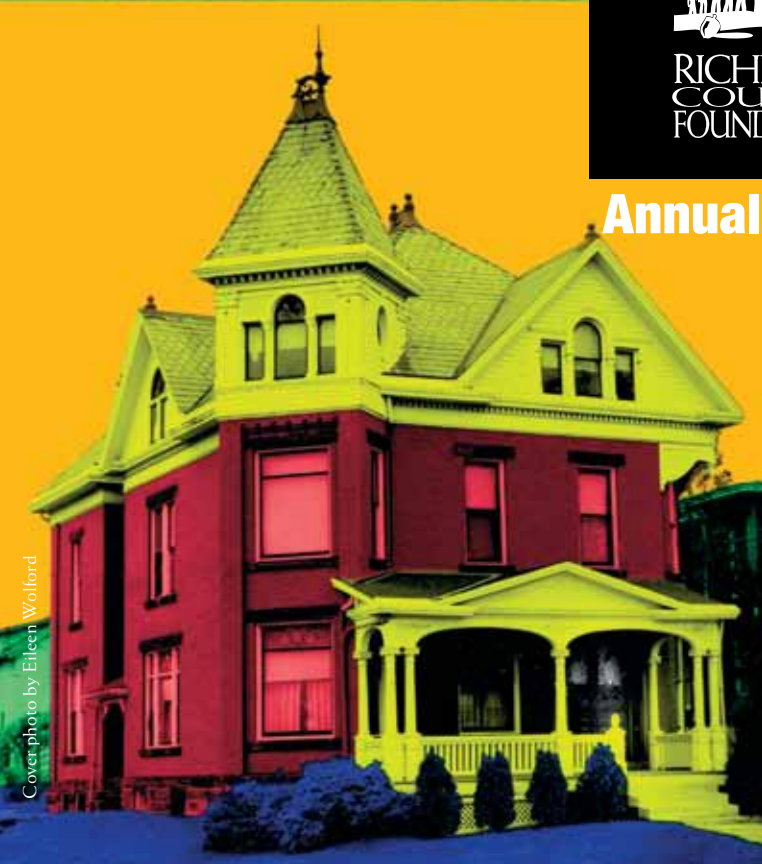


2013



**RICHLAND
COUNTY
FOUNDATION**

Annual Report





Moving forward with collective impact

Historically, the annual report letter has been a review of the previous year's accomplishments. This year, we will use this opportunity to talk about what can be done.

The Richland County Foundation is positioned to make a positive difference in our community, for purposeful change, for real change.

The Foundation seeks to be the entity that brings groups, ideas and projects together. Traditional, responsive grant making will always have a place in our Foundation. But we feel we can do more.

It is called collective impact.

Collective impact is more robust than collaboration; it requires leaders get together frequently over the long haul to tackle a well defined problem. Besides an investment of time, other keys to success are a common agenda, shared measurement system, mutually reinforcing activities, continuous communication and a support organization.

Collective impact works when it involves many people from a variety of organizations solving complex and systematic issues such as improving the workforce, economic development, access to health care, improved graduation rates and a cleaner environment.

As a first step in the process, the Foundation convened a broad spectrum of Richland County residents to get their input on the community's issues and how to creatively, effectively and proactively invest funds.

In order for collective impact to gain traction, there needs to be a sense of urgency, support and a champion.

The Foundation aspires to be the leader in this process to make a difference.



Michael L. Bennett

Mike Bennett, Chair, Board of Trustees

Bradford Groves

Bradford Groves, President



Board of Trustees

Michael L. Bennett **Chairman**
 John C. Roby **Chair Elect**
 Justin Marotta **Secretary**
 Chriss Harris **Treasurer**

Pat Addeo
 Glenna Cannon
 David D. Carto
 Michael Chambers
 Bruce Cummins

Beth DeLaney
 Sidney Foltz, III
 Dr. Bruce Jackson
 John Kastelic
 Mark Masters

Jason Murray
 Sharlene Neumann
 Cynthia B. O'Neal
 W. Chandler Stevens
 Cathy Stimpert

Sam VanCura
 Richard Walters



Staff (Left to Right)

Maura Teynor **Director of Donor Services and Communications**
 Kristina Johnston **Administrative Assistant**
 Robert Barrett, CPA **VP for Finance and Operations**
 Bradford Groves **President**
 Allura Watson **Program Officer**

**RICHLAND COUNTY FOUNDATION
STATEMENT OF ASSETS, LIABILITIES, AND NET ASSETS
MODIFIED CASH BASIS**

December 31, 2013 and 2012

**STATEMENT OF REVENUE COLLECTED, EXPENDITURES PAID
AND OTHER CHANGES IN NET ASSETS
MODIFIED CASH BASIS**

Years ended December 31, 2013 and 2012

	2013	2012
ASSETS		
Assets		
Cash	\$ 1,100,854	\$ 1,611,072
Investments	135,001,079	104,257,365
Property and Equipment, Net	95,901	41,842
Construction in Progress	402,399	0
TOTAL ASSETS	\$ 136,600,233	\$105,910,279
LIABILITIES AND NET ASSETS		
Liabilities		
Payroll Taxes Withheld	\$ 1,420	\$ 1,396
Annuity Contracts Payable	58,853	68,185
Funds Held as Agency Endowments	6,027,554	5,323,894
Total Liabilities	6,087,827	5,393,475
Net Assests		
Unrestricted	71,269,714	50,710,774
Temporarily Restricted	40,138,468	31,365,379
Permanently Restricted	19,104,224	18,440,651
Total Net Assets	130,512,406	100,516,804
TOTAL LIABILITIES AND NET ASSETS	\$136,600,233	\$105,910,279

	2013			2012	
	Unrestricted	Temporarily Restricted	Permanently Restricted	Total	Total
Revenue and Support					
Contributions	\$10,031,658	\$ 2,750,114	\$ 650,857	\$ 13,432,629	\$ 17,647,939
Investment Income					
Interest and Dividends	1,224,188	1,115,565	0	2,339,753	2,303,878
Net Realized Gains on Investments	2,088,020	2,174,058	0	4,262,078	1,170,813
Net Unrealized Gains on Investments	9,387,902	5,262,886	0	14,650,788	7,094,062
Less Investment and Custody Fees	(161,895)	0	0	(161,895)	(154,150)
Net Investment Income	12,538,215	8,552,509	0	21,090,724	10,414,603
Change in Gift Annuity Value	0	(1,447)	0	(1,447)	(6,499)
Net Assets Released From Restrictions	1,293,838	(1,293,838)	0	0	0
Reclassification of Net Assets	517,872	(530,588)	12,716	0	0
Total Revenue and Support	24,381,583	9,476,750	663,573	34,521,906	28,056,043
Expenses and Other Deductions					
Net Grants Paid	3,271,731	0	0	3,271,731	2,470,242
Administrative Expenses	550,912	0	0	550,912	508,787
Total Expenses and Other Deductions	3,822,643	0	0	3,822,643	2,979,029
Increase in Net Assets Before Current Year Change in Agency Liability	20,558,940	9,476,750	663,573	30,699,263	25,077,014
Current Year Change in Agency Liability	0	(703,661)	0	(703,661)	(536,685)
Increase in Net Assets	20,558,940	8,773,089	663,573	29,995,602	24,540,329
Net Assets at Beginning of Year	50,710,774	31,365,379	18,440,651	100,516,804	75,976,475
Net Assets at End of Year	\$ 71,269,714	\$40,138,468	\$19,104,224	\$130,512,406	\$ 100,516,804

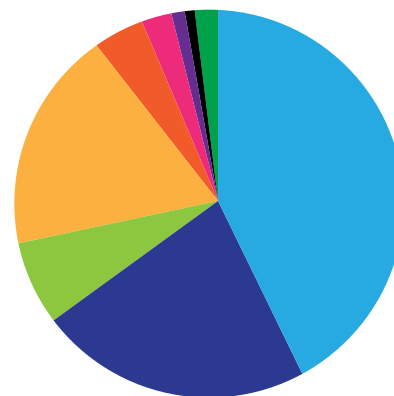
The financial information provided is taken from the financial statements as audited by Riester, Lump & Burton, CPAs, Inc. A copy of the complete audited statement is on file at the Foundation office and available upon request.



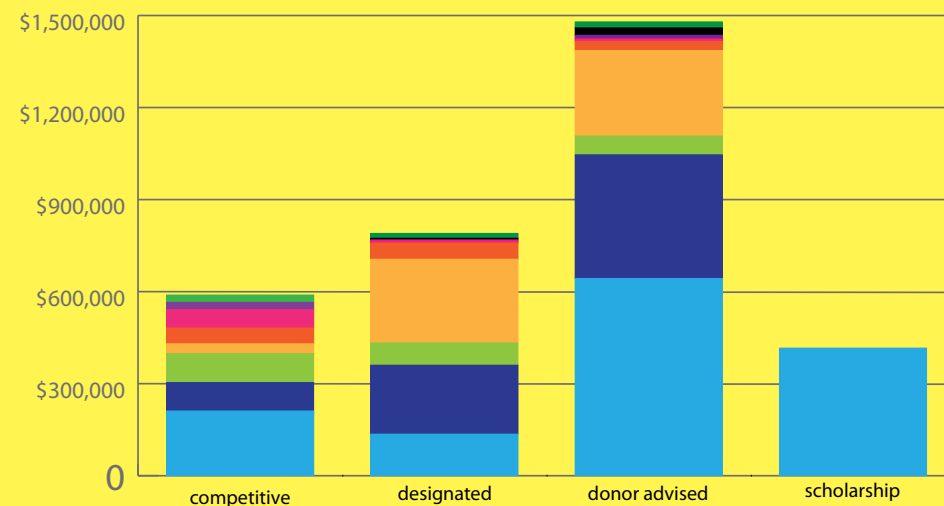
The Richland County Foundation awarded over \$3.2 million in grants to cover a broad range of program areas. These grants are awarded from unrestricted funds, donor advised funds, donor-designated funds, field of interest funds, agency funds or scholarship funds.

Total 2013 Grants by Program Area

Education	1,400,484
Community & Community Development	726,793
Children, Youth & Families	237,867
Arts & Culture	583,526
Human Services	128,519
Health Services	76,498
Economic Development	34,809
Churches	29,341
Environment	55,880
Total	\$3,273,717



Angelo Fields, Friendly House employee, helps Brianna Lindsay inflate a basketball. The Foundation and Friendly House have worked together from the very beginning. In 1948, the Foundation made its first grant for \$48,000 to the Friendly House Association for its building program.



Economic Development



Environment



Health



Arts and Culture



Community Development



Education



Human Service



2013 Grants by Fund Type and Program Area

Competitive grants are awarded from unrestricted and field of interest funds. Non-competitive grants are awarded from donor advised and designated funds, including nonprofit endowment funds.

	Competitive	Designated	Donor Advised	Scholarship	Total Awarded
Education	\$206,731	\$135,574	\$642,229	\$415,950	\$1,400,484
Community Development	98,415	224,621	403,757	-	726,793
Children, Families & Youth	104,171	72,525	61,171	-	237,867
Arts & Culture	32,339	273,037	278,150	-	583,526
Human Services	44,568	53,113	30,838	-	128,519
Health Services	57,299	9,699	9,500	-	76,498
Economic Development	24,809	-	10,000	-	34,809
Churches	-	5,341	24,000	-	29,341
Environment	20,548	15,832	19,500	-	55,880
Total	\$588,880 (18%)	\$789,742 (24%)	\$1,479,145 (45%)	\$415,950 (13%)	\$3,273,717 (100%)

2013 Grants

Education

College Scholarships

Scholarships

428 Scholarship grants
\$415,950

Competitive

Ashland University

Capital Campaign/College of Nursing
\$50,000

Discovery School

Program Support
\$724

The Foundation Center

Program Support
\$3,500

Galion City Schools

Program support (2 grants)
\$18,115

Madison Local Schools

Transitional Work Experience
with Goodwill Industries
\$6,000

Mansfield City Schools

Program Support / Capstone
\$500

North Central State College Foundation

Opening Doors Capital Campaign
\$100,000

South Central Local Schools

School Supplies
\$2,892

SPARC/P-16 Council

Student Assessments
\$25,000

Designated

Ashland University

Library Books
\$509

Clear Fork Valley Foundation

Grants and Scholarships
\$4,479

Lucas Local Schools

Educational Projects & Programs
\$24,113

Mansfield City Schools

Art & Music Instruction
\$556

Program Support

\$489

Methodist Theological Seminary

Scholarship
\$211

North Central State College

Financial Aid
\$3,319

North Central State College Foundation

General Support
\$30,718

Ohio State University–Mansfield

Business Development Support
\$23,071

Faculty Development Support

\$5,897

Scholarship Support

\$22,312

Financial Aid for Richland County

Students

\$13,275

Ontario Local Schools

Technology Programs
\$6,625

Donor Advised Funds

Ashland University

Capital Campaign/College of Nursing
(4 grants)
\$40,832

Ashbrook Center (2 grants)

\$7,500

General Support

\$3,000

Lecture Series

\$750

Brown University

General Support
\$3,000

Discovery School

General Support (3 grants)
\$10,500

Emma Willard School

General Support
\$3,000

Madison Local Schools

Program Support (2 grants)
\$1,500

Mansfield Christian School

General Support
\$6,000

Mansfield-Richland Area Educational Foundation

Support for Economic Club
\$210

North Central State College Foundation

Capital Campaign (2 grants)
\$95,000

Scholarships
\$20,000

Building Renovation

\$10,000

Emerald Club Sponsorship

\$5,000

General Support (2 grants)

\$3,250

Ohio State University College of Medicine

General Support
\$3,000

Ohio State University-Mansfield Scholarships (3 grants)

\$11,958

Capital Improvements (2 grants)

\$26,250

Plymouth-Shiloh Local Schools

Art & Music Supplies
\$13,396

Shelby City Schools

Capital Improvements
\$365,000

Soldiers and Sailors Museum

General Support (2 grants)
\$11,500

Program Support

\$750

South Central Local Schools

Supplies
\$833



489 grants
\$1,400,484



Education accounted for more than
\$1.4 million in grants in 2013.



Community & Community Development

Competitive

Bellville Neighborhood Outreach Center

Improvements to Elevator
\$7,000

City of Mansfield

Improvements to Tennis Courts
\$415

North Lake Park Bridge Replacement
\$10,000

Downtown Mansfield, Inc.

MidOhio Heritage Home Program
\$30,000

Korean War Veterans Assoc. #51

Program Support
\$500

Philanthropy Ohio

Program Support
\$500

Richland Community Development Group

Program Support
\$50,000

Designated Funds

Boy Scouts Heart of Ohio Council

General Support
\$7,894

Program Support for Richland County Scouts (2 grants)
\$9,830

Kingwood Center

General Support (4 grants)
\$28,015

Mansfield Area Intergroup

General Support
\$540

Mansfield Richland Cty. Public Library

Books and Cassette Tape, Talking Books
\$2,375

Mansfield Rotary Club Foundation

McGowan Courage Awards
\$4,669

Ohio Genealogical Society

General Support
\$214

North End Community Improvement Collaborative, Inc.

General Support (4 grants)
\$150,000

United Way of Richland County

General Support (2 grants)
\$21,084

Donor Advised

Autism Awareness Walk-A-Thon, Inc.

General Support
\$500

Boy Scouts Heart of Ohio Council

Operations and Endowment
\$10,000

Downtown Mansfield, Inc.

Fun in the Parks Program (2 grants)
\$2,500

General and Program Support (3 grants)
\$4,250

Galion Area United Way, Inc.

Annual Campaign
\$1,000

Galion Community Foundation

Program Support
\$250

Hade Development Foundation

Pioneer Rest Cemetery
\$2,500

Harmony House Homeless Services, Inc.

General Support (4 grants)
\$4,000

Summer Intern Program
\$4,200

Humane Society of Richland County

General Support (2 grants)
\$2,000

City of Mansfield

North Lake Park Bridge Replacement
\$25,000

Summer Intern Program
\$4,200

Swimming Pools Summer Operations (3 grants)
\$71,432

Mansfield Rotary Club Foundation

Program Support (2 grants)
\$2,800

Mountain Family Center

General Support
\$500

Plymouth –Shiloh Food Pantry

Program Support
\$3,625

Richland County Habitat for Humanity

General Support
\$2,000

Salvation Army of Naples

General Support
\$300

Shadowcliff Lodge

General Support
\$500

Shelby Help Line Ministries

General Support (2 grants)
\$4,000

The Fish of Shelby

General Support
\$1,000

North End Community Improvement Collaborative, Inc.

General Support (2 grants)
\$145,000

Summer Intern Program
\$4,200

United Way of Richland County

Annual Campaign (6 grants)
\$108,000

65 grants
\$726,793

Children/Youth/Families

Competitive

Big Brothers/Big Sisters of N. Central Ohio

Program Support
\$500

Disabled Sports USA

Program Support
\$7,000

Friendly House Association

Coats for Kids Program
\$3,000

Raemelton Therapeutic Equestrian Center

Therapy Riding Scholarships (3 grants)
\$46,983

Designated

32 Degree Masonic Learning Centers, Inc.

General Support
\$20,338

Friendly House Association

General Support (3 grants)
\$2,302

Camperships
\$128

Guernsey Foundation

College Scholarships
\$1,000

Mansfield Area Y

General Support (3 grants)
\$6,540

Support of Women's and Children's Programs (3 grants)
\$16,802

Richland County Children Services

Children Services Gift Fund (2 grants)
\$2,133

Richland County Children's Auxillary

General Support of The Store
\$314

Richland Pregnancy Services

General Support
\$2,566

Toy Time, Inc.

General Support
\$64

Trapshooting Hall of Fame

General Support
\$20,338

Donor Advised

Big Brothers/Big Sisters of North Central Ohio

General Support
\$3,000

Culliver Reading Center

General Support (2 grants)
\$5,300

Friendly House Association

General Support (5 grants)
\$3,421

Program Support
\$1,000

Galion Community Center YMCA

Program Support
\$500

Capital Campaign
\$15,000

Galion Kiwanis Club

Annual Campaign
\$250

Junior Achievement of North Central Ohio

General Support
\$2,500

Kids' Connection of Ohio, Inc.

General Support
\$2,500

Little Buckeye Children's Museum

General Support
\$4,500

Mansfield Area Y

Summer Intern Program
\$4,200

74 grants
\$237,867

Raemelton Therapeutic Equestrian Center

General Support (4 grants)
\$14,000

Richland County Children's Auxillary

General Support
\$5,000

Connections Fund Grants

Connections Fund Grants

7 grants
\$5,725

Summertime Kids Program

Summertime Kids Grants

18 grants
\$24,243

Women's Fund Grants

Women's Fund Grants

4 grants
\$16,720



The Neos Dance Theater purchased a mobile stage for its performances with Foundation support.

Designated, donor advised and competitive grants are given to The Mansfield Art Center. The Art of the Brick was a popular exhibit in 2013.

43 grants
\$583,526

Arts & Culture

Competitive

Mansfield Community Playhouse

HVAC Replacement
\$14,839

Morton One Room Historical Society

Field Trip Transportation
\$2,500

Neos Dance Theatre

General Support
\$15,000

Designated

Children's Theatre Foundation, Inc.

General Support
\$1,268

Mansfield Art Center

General Support (5 grants)
\$13,849

Mansfield Community Playhouse

General Support
\$360

Renaissance Performing Arts

General Support of Theatre (7 grants)
\$186,546

General Support of Mansfield Symphony

(4 grants)
\$52,044

Richland Academy of the Arts

General Support
\$570

Building Repairs
\$1,245

Richland County Historical Society

General Support
\$12,906

Richland County Museum

General Support
\$4,249

Donor Advised

Mansfield Art Center

General Support (3 grants)
\$81,600

Roof Repairs
\$82,800

Program Support (3 grants)

\$9,200

Philharmonic Center for the Arts

General Support
\$2,000

Plymouth Area Historical Society

General Support
\$5,000

Renaissance Performing Arts

General Support
\$10,000

Symphony Education Initiative

\$20,000

Program Support (3 grants)

\$14,500

Property Improvements

\$50,000

Richland Academy of the Arts, Inc.

General Support
\$2,500

Scholarships

\$300

Rocky Mountain Repertory Theatre

General Support
\$250

Mansfield Memorial Homes received support for its Rotary Adult Day Care, Homemaker Home Health and Meals on Wheels programs.

Human Services

Competitive

Catholic Charities

Community Emergency Services Program
\$30,000

Mansfield Memorial Homes

Meals on Wheels Program
\$7,875

Mary McLeod-Bethune Intervention

Transportation of Underserved
\$6,693

Designated

American Red Cross

General Support
\$64

Domestic Violence Shelter, Inc.

General Support
\$1,588

Mansfield Cancer Foundation

General Support (4 grants)
\$23,450

Innovations in Integration
\$11,000

Program Support
\$4,000

Salvation Army

General Support (3 grants)
\$11,423

Volunteers of America

General Support for Richland County Programs
\$1,588

Donor Advised

American Red Cross

General Support (2 grants)
\$3,250

Catalyst Life Services

Support for New Beginnings Program
\$1,588

Catholic Charities

General Support
\$500

Domestic Violence Shelter, Inc.

Program Support
\$3,000

Friends of the 179th Airlift Wing

General Support
\$5,000

Harmony House Homeless Services, Inc.

Program Support
\$5,000

Ohio District 5 Area Agency on Aging

General Support
\$10,000

Ohio Heartland Community Action

General Support
\$500

Raemelton Therapeutic Equestrian Center

Program Support
\$1,000

Salvation Army

General Support (2 grants)
\$750

Volunteers of America

General Support
\$250



28 grants
\$128,519

16 grants
\$76,498

Health Services

Competitive

Catalyst Life Services

Capital Improvements to Crisis Unit
\$17,299

Mansfield Memorial Homes

Homemaker Home Health
\$25,000

Rotary Adult Daycare

\$15,000

Designated

Alzheimer's Association-Northwest Ohio Chapter

General Support
\$329

Catalyst Life Services

General Support
\$3,435

Mansfield Memorial Homes

Employee Awards
\$963

General Support

\$3,434

MedCentral Health System

General Support
\$1,355

Third Street Family Health Service

General Support
\$183

Donor Advised

Avow Hospice of Naples

General Support
\$2,000

Catalyst Life Services

General Support
\$1,500

MedCentral Health System

Hospice Program (2 grants)
\$2,000

General Support

\$1,000

Michael J. Fox Foundation for Parkinsons Research

General Support
\$2,500

Naples Community Health Care Foundation

General Support
\$500



Churches

Designated

First Congregational Church

General Support (2 grants)
\$716

Individual Assistance Program of the Church

\$583

Church Music Department

\$1,451

First Presbyterian Church (U.S.A.)

General Support (2 grants)
\$2,168

Saint John's United Church of Christ

General Support
\$423

Donor Advised

First Congregational Church

General Support (5 grants)
\$8,000

Saint James Episcopal Church

Property Improvements
\$10,000

Saint Peter's Parish

Scholarships
\$6,000

Environment

Competitive

Ohio Bird Sanctuary

Capital Campaign for Educational Building
\$20,548

Designated

Ohio Bird Sanctuary

General Support
\$15,832

Donor Advised

Buckeye Forest Council

General Support
\$2,000

Conservancy of Southwest Florida

General Support
\$2,000

North Central Ohio Land Conservancy Inc.

General Support
\$5,000

Ohio Bird Sanctuary

General Support (2 grants)
\$5,300

Summer Intern Program

\$4,200

Ohio Environmental Council

General Support
\$1,000



Environmental grants exceeded \$55,000 in 2013.

Economic Development

Competitive

North Central State College Foundation

Kehoe Center – R. Phillips Conference Center Development
\$24,809

Donor Advised

Crawford County Economic Development Dept.

General Support
\$5,000

Richland Community Development Group

General Support
\$5,000

Girls from Ocie Hill summer program helped Mansfield Memorial Homes residents make and hang bird feeders.

Catalyst Life Services received a \$17,299 grant for capital improvements to its Crisis Unit. Pictured are Laura Montgomery and Veronica Groff.



15 grants
\$29,341

9 grants
\$55,880

3 grants
\$ 34,809



Richland County Foundation offers a variety of instruments to allow an individual, family or organization to become a donor and realize their charitable goals. Individuals may choose to pool their resources with an already existing fund or may wish to establish a new fund.



The Foundation also works with professional advisors to assist in the charitable giving process.



Establish a Fund

Establishing a fund within the Foundation allows donors the freedom to specify how they want their charitable dollars to be used now and in the future. By selecting among the various options, an unrestricted fund, a field of interest fund, a donor designated fund, a donor advised fund, an agency fund, or a scholarship fund, donors can tailor their fund to be as specific or as broad as they wish in order to carry out their philanthropy.

Unrestricted Funds offer the donor and Foundation the broadest options to address and to impact the community's current and ever-changing needs.

- Anonymous Donor Community Support Fund
- C. Wilson & Josephine Mayberry Barnes Fund
- Robert B. Black Fund
- Roger A. & Elizabeth Thomas Black Fund
- Betty J. Blackstone Fund
- Virginia A. & Thomas C. Blizzard Fund
- Marion B. Bowers Fund
- Katharine C. Bristol Fund
- Roy G. & Nancy Y. Brown Fund
- Helen M. Burkholder Fund
- Joan B. & Truman Clark Fund
- Rex E. & Marjorie Sue Collins Fund
- Community Endowment Fund
- John B. & Pearl R. Conard Charitable Fund
- Consolidated Memorial Fund
- Marian M. Constance Fund
- William R. & Mary Jane Cress Fund
- Pearl M. Danback Fund
- Earle J. & Dottie Deems Fund
- Dean A. & Eleanor H. Eckert Fund
- Jessie L. Eckert Fund
- Doris J. & Robert H. Enskat Fund
- David W. & Louise W. Evans Fund
- David N. & Miriam G. Feiser Memorial Fund
- Fellows Fund
- Charles C. Fox Fund
- Florence Fox Fund
- James H. Germany Fund
- Carl B. & Marie L. Gibson Fund
- Earl H. Goetz Fund
- Roger M. & Elizabeth B. Gray Fund
- James H. Hoffman Fund

- Herbert S. Jones Fund
- Jesse LaDow Fund
- Nanciann P. McCormick Fund
- Dell Armstrong McMillen Fund
- Verdabelle Plank Miller Fund
- Dr. Donald E. Mills Fund
- Milton C. & Mary Louise Oakes Fund
- Katherine L. Parker Fund
- Catherine L. Rall Fund
- Edna K. Rex Fund
- Jane W. & John Bradley Rhind Fund
- Betty Diesler Risser Fund
- John & Dell Robinson Family Fund
- Margaret Hay Russell Fund
- Esther Fickes Shaffer Fund
- Thomas A. & Clara H. Siegenthaler Fund
- Mary C. Slabaugh Fund
- Walter C. Stevens Family Fund
- Mary Mead Sturges & Robert Sturges Memorial Fund
- Alan P. Tappan Fund
- Heloise H. Tappan Memorial Fund
- Paul R. Tappan Fund
- W. Richard Tappan Fund
- Pauline S. Treisch Fund
- Charles R. Underhill Fund
- Mary L. Ward Fund
- Mary S. Wilsdon Fund
- Marion Draffan Wisdom Fund
- Charles G. Young Family Fund
- F. Wayne & Isabel Bogan Young Fund

The Plymouth-Shiloh Food Pantry received \$3,625 from a donor advised fund for program support.



Field of Interest Funds allow our donors the opportunity to support specific interests within a broad area such as children's programs, the arts, education, the elderly, or health services.

George W. Blymyer Fund
 Henry A. & Melissa J. Booth Memorial Fund
 Child Care Choices Fund
 Emeline Fate Christian Memorial Fund
 Peter S. Clark Memorial Fund
 Clear Fork Valley Foundation Fund
 Scott F. Coffin Fund
 Connections Fund
 Consolidated Individual Assistance Fund
 Lillian R. Dickson Fund
 Dean & Eleanor H. Eckert Fund
 Frances Fern Ecki Fund
 Galion Community Education Bricks & Mortar Fund
 Galion Community Education Foundation Fund
 Richard David Gardner Fund
 Richard R. & Veda J. Gardner Fund
 Guy T. Goodman Trust Fund

Charlotte B. Gugler Fund
 James H. Hoffman Fund
 James A. Jones, MD Memorial Fund
 Helen Kaufman Fund
 Land Preservation Fund for Richland County
 Ralph C. Lutz Fund
 A. Robert & Eve Matthews Fund
 Michael Robert McBride Memorial Fund
 Eleanor Searle McCollum Teacher & Education Fund
 Leona M. Miles Funds
 Verdabelle Plank Miller Fund
 Mary J. Poticny Fund
 Earl J. & Carlie Leona Muth Memorial Fund
 Scattergood Fund
 Katharine McIntyre Shaffer Fund
 Howard & Majoria S. Smith-Bellville Community Trust Fund

Smokeless America Fun Foundation Fund
 Ethel Mayer Southeast Community Fund
 Christopher Mark Stull Fund
 Summertime Kids Fund
 Robert J. & Stella F. Sutter Fund
 Heloise H. Tappan Estate Fund
 Paul R. Tappan Fund
 Teacher Assistance Program Fund
 The Store Fund
 Sarah B. Thomas Fund
 Voegele-Bahl Endowment Fund
 Ed Wadman Scleroderma Research Fund
 Ralph O. & Sarah L. Wise Fund
 Women's Fund
 Fund for Young Children with ALD

Donor Designated Funds allow donors the opportunity to provide annual support to specific charities of their choice.

Alzheimer's Association of NCO Endowment Fund
 John F. & Elizabeth W. Bissman Fund
 Raymond & Bessie Bixler Memorial Fund
 Esther M. Black Fund
 Betty J. Blackstone Fund
 Thomas C. & Virginia A. Blizzard Fund
 Boy Scouts of America Endowment Fund
 John S. & Laura Barr Brant Fund
 Betty Butler Fund
 Rex E. & Marjorie Sue Collins Fund
 Community Baptist Bible Church Scholarship Fund
 Croghan Family Fund for Renaissance Performing Arts
 Croghan Family Fund for Richland Academy
 Mary E. Delp Fund
 Finefrock Memorial Fund
 First Congregational Church of Mansfield, OH Permanent Endowment Fund
 Founders Fund
 Forrest W. Freeman, MD & Florence J. Freeman Fund
 Gerald F. Fuddy Fund
 Richard R. & Veda J. Gardner Fund
 Earl H. Goetz Memorial Fund
 Earl H. Goetz Fund in Honor of Major McGowan
 Earl H. Goetz Fund in Honor of Vern Stover
 James H. Hoffman Fund
 Frances H. Houston Memorial Fund
 Fred B. Hout Memorial Fund
 David E. Hughes Fund
 Keyser Library Fund
 Jessamine L. Lewis Fund
 Lucas Local Schools Sustaining Fund
 Esther G. Lutz Fund
 Floyd H. Lutz Fund

Ralph C. Lutz Fund
 Ruth E. Lutz Fund
 Mansfield Art Center Endowment Fund
 Mansfield University Foundation Endowment Fund
 William & Katherine Jane McCarrick Fund
 Eleanor Searle McCollum Fund
 McGowan Courage Awards Fund
 John A. & Florence B. Mintz Fund
 Arthur W. Negin Memorial Fund
 Katherine M. Norem Fund
 North End Community Improvement Collaborative Inc. Fund
 North Lake Park Fund
 Milton C. & Mary Louise Oakes Fund
 Gertrude M. Odson Fund
 Ohio Genealogical Library Endowment Fund
 OSU/NCTC Photo Arts Fund
 Rowland & Delight Patricia Poth Fund
 Rainbow's End Christian Center Fund in Memory of Elizabeth Copp
 Renaissance Performing Arts Assoc. Inc. Fund
 Roby Family Fund
 Eleanor S. & Stanley J. Ryckman Music Endowment Fund
 Alice B. Sanford Memorial Fund
 Marian L. Stauffer Fund
 Third Street Family Health Services Endowment Fund
 Turley Raemelton Scholarship Fund
 Betty Thompson Wagner Memorial Fund
 Dr. Rebecca Sue Wappner Memorial Scholarship Fund
 Charles G. Young Family Fund



Assumes 5% annual payout and 8% rate of return



The Richland Community Development Group received \$50,000 for sector projects granted from the Paul R. Tappan Fund, Marion B. Bowers Fund, Katharine C. Bristol Fund and the Pearl M. Danback Fund. One sector project was a media and community campaign to save the aircraft mission at the 179th Airlift Reserve.



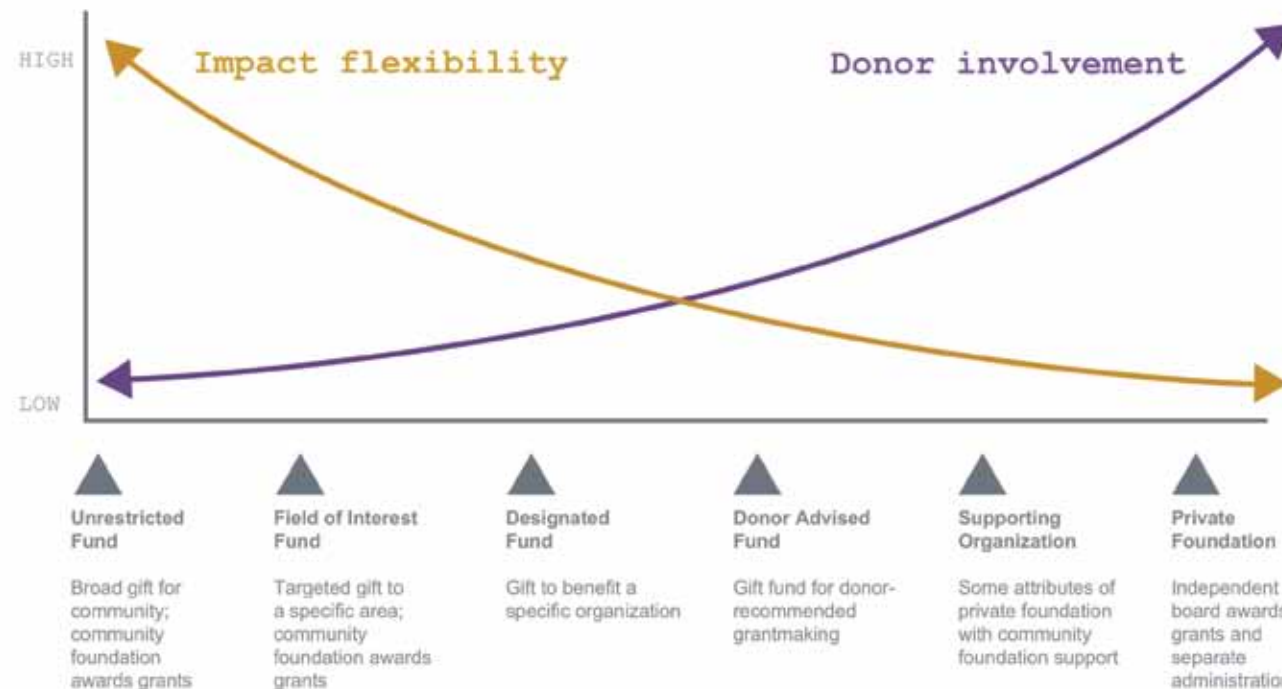
Gulimina Mahamuti, Ohio Wesleyan University Music professor, taught piano to children at Ocie Hill.

Donor Advised Funds allow the donor the opportunity to make grant suggestions to their favorite charities during their lifetime, and are an attractive alternative to a private foundation, offering the same benefits without the responsibility and cost of administration.

Betty J. Adair Fund
 Charles V. & Constance D. Adair Fund
 P.K. Athmaram, MD Fund
 Hejjaji & P.K. Athmaram, MD Fund
 Paul H. & Susan Gallagher Bailey Fund
 Wilbur G. & Esther L. Beer Fund
 F. Loyal & Judith B. Bemiller Fund
 Donald S. & Clara Louise Black Fund
 Dr. & Mrs. Stanley L. Brody Fund
 David L. & Frances D. Carto Fund
 DeLaney Family Fund
 James Fanello Fund
 C. Eugene & Sara A. Goin Fund
 Gorman Fund
 Carl & Annamarie Fernyak Fund
 John P. Gross Family Fund
 Mariann S. & Avery C. Hand Family Fund

Hansen Fund for Women & Girls, The
 Jennette C. Hartman Fund
 Fred B. & Marian J. Hout Fund
 Kaufman Family Fund
 Dr. J. Bruce & Nancy L. Jackson Fund
 Barbara & George H. Keyser Fund
 Konstam Family Fund
 Mansfield Civitan Club Fund
 Betty L. & Joseph E. Massa Fund
 Eleanor McCollum Foundation Fund
 Annette L. McCormick Fund for the Environment
 George A. & Olive L. Miller Fund
 Miller/Pattillo Memorial Fund
 MT Business Technologies Community Fund
 Northwest Community Fund
 Dell M. Robinson Fund
 Grace S. & Joe R. Roby Fund

Rotary Club of Mansfield - Tom Doty Community Fund
 Fran & Warren Rupp Advised Fund
 Alice B. & Allen M. Sanford Fund
 Jean U. & George V. Sauter Fund
 Ann Hartman Schettler Fund
 Shelby Home & Public Health Endowment Fund
 Richard & Lorraine Shrilla Fund
 Pamela H. & Thomas R. Siegenthaler Fund
 Matthew P. & Linda H. Smith Fund
 Wray C. & Janet B. Smith Fund
 Richard G. & Helen Taylor Fund
 Thomas Family Fund
 Warner-Kafer Family Fund
 Marion Draffan Wisdom Fund
 Bruce & Sally Hiatt Workman Fund



Agency Funds offer nonprofits the opportunity to build an endowment which may support or provide an annual revenue stream for the overall operations of the organization. Organizations not only benefit from this additional revenue but also from the Foundation's financial stability and integrity that assures their donors that their gifts will be prudently managed.

Carrousel Community Trust Fund
 Center for Individual and Family Services, Inc. Endowment Fund
 Children's Theatre Foundation, Inc. Endowment Fund
 Discovery School Endowment Fund
 First Presbyterian Church (U.S.A.), Mansfield, Ohio Endowment Fund
 Hospice of North Central Ohio Endowment Fund
 Mansfield Area Y Endowment Fund
 Mansfield Cancer Foundation Endowment Fund
 Mansfield Fine Arts Guild, Inc. Endowment Fund

Mansfield Playhouse Endowment Fund
 Mansfield Symphony Society Endowment Fund
 Mohican School in the Out-of-Doors Endowment Fund
 North Central Technical College (N.C.T.C.) Foundation Endowment Fund
 Ohio Bird Sanctuary Endowment Fund
 Ontario Public Schools Technology Fund B
 OSU-Mansfield Business Program Endowment Fund
 OSU-Mansfield Faculty Development Endowment Fund
 OSU-Mansfield Scholarship Endowment Fund

Pioneer Career & Technology Center Fund A
 Rehab Center Endowment Fund
 Richland Academy Endowment Fund
 Richland County Historical Society Endowment Fund
 Richland Newhope Center Fund
 United Way of Richland County Endowment Fund
 YWCA of Mansfield Endowment Fund

Agency Designated Funds are not endowed funds, so the nonprofit may use the principal of the fund. Like the Agency Endowment funds, these funds support or provide an annual revenue stream for the overall operations of the organization.

Friendly House Association Capital Fund
 Kingwood Center Fund
 Malabar Farm Foundation Fund
 Mansfield City Public Schools Fund
 Mansfield City Schools Fine Arts Fund

Ontario Public Schools Technology Fund A
 Pioneer Career and Technology Center Equipment and Technology Fund B
 Richland County Historical Society Fund "B"
 Richland Newhope Industries Fund

Richland Newhope Fund II
 Salvation Army Fund
 University Club Educational Foundation Scholarship Fund



Jessica Kruger, Ohio State University Zoology major, participated in the summer internship program at the Ohio Bird Sanctuary.



Katherine Gerhart and Karen Clifton received college scholarships from the Women's Fund.

Scholarship Funds allow donors to specify certain fields of study, specific high schools and/or specific colleges that students may attend. Donors may establish a fund for a minimum of \$20,000 which may be in honor or memory of a loved one.

Frank & Bee Ackard Memorial Fund
 Banks-Willeke-Bunfill Scholarship Fund
 Meg Black Memorial Scholarship Fund
 Black Women United Scholarship for Success Fund
 Thomas C. & Virginia A. Blizzard Fund
 Joseph T. "Jep" Bloor Memorial Scholarship Fund
 Mary Jane Bolus Scholarship Fund
 Emily Campbell Brown & Charles Gailey Brown "First Generation to College" Fund
 Karyne & Joe Carey Scholarship Fund
 Mary & Maxton Case Fund
 Children's Theatre Foundation, Inc. Endowment Fund
 James H. Clements II Memorial Scholarship Fund
 Consolidated Scholarship Fund
 Davidson Scholarship Fund
 Tim Davis, Jr. Scholarship Fund
 Shelley Dees Memorial Fund
 Dean A. & Eleanor H. Eckert Fund
 Marilyn J. & David P. Eckstein Memorial Scholarship Fund
 Miriam & Russell Ferrell Scholarship Fund
 M.I. & Feenie Fillweber Scholarship Fund
 Mark S. Fisher Memorial Scholarship Fund
 George & Pam Fonseca Scholarship Fund

Phil Ford Scholar Athlete Scholarship Fund
 S.N. & Ada Ford Scholarship Fund
 Diane L. Gibson Memorial Scholarship Fund
 Earl H. Goetz Fund in Honor of Major McGowan
 Earl H. Goetz Fund in Honor of Vern Stover
 Charles H. & Dorothy B. Hickox Memorial Scholarship Fund
 Ocie Hill Scholarship Fund
 Betty J. Horner Scholarship Fund
 Susan L. Jaynes Memorial Scholarship Fund
 Monica M. Kaye Memorial Fund
 Mary M. Kowalchik Scholarship Fund
 Lexington Alumni Association Scholarship Fund
 Lexington Kiwanis Club Scholarship Fund
 Licensed Practical Nurse Assoc. of Ohio, Division #5 Scholarship Fund
 Reggie Luby Scholarship Fund
 Ruth E. Lutz Fund
 Mansfield Noon Lions Club Scholarship Fund
 Eleanor Searle McCollum Scholarship Fund
 Nancy McConnell Special Education Scholarship Fund
 David S. McVicker Scholarship Fund
 John L. Morley Memorial Scholarship Fund
 Helen Keating Ott Library Scholarship Fund
 Richland County Medical Auxiliary Scholarship Fund

Richard David Ronk Memorial Scholarship Fund
 Grace S. & Joe R. Roby Scholarship Fund
 Roby Family Fund
 Fran & Warren Rupp Scholarship Fund
 Eleanor S. Ryckman Memorial Scholarship Fund
 Paul & Adelyn Shumaker Fund
 A. Richard Stofer Scholarship Fund
 Dorris C. Stofer Scholarship Fund
 Donald F. Thompson Fund
 Frederick L. & Harriett S. Tracy Scholarship Fund
 Richard & Sally Uhde STEM Scholarship Fund
 University & College Access Network Scholarship Fund
 University Club Educational Foundation-James P. Weldon Memorial Scholarship Fund
 Gregory VanScyoc Memorial Scholarship Fund
 Helen S. Weldon Scholarship Fund
 James P. Weldon Scholarship Fund
 William M. Weldon Scholarship Fund
 Walter W. Willis Rotary Scholarship Fund
 Marilyn A. Wilson Scholarship Fund
 Ashley Yetzer Memorial Scholarship Fund
 Yuncker Memorial Fund

Foundation Fellows

Visionary Fellowships (\$5,000 and up)

Naomi J. Albers*
 Donald N. Beppard*, MD (by friends)
 Frank T. Black Foundation
 Joseph J. Fackler*
 Ruth M. Newman* (by Dr. William C. Newman)
 Dr. William C. Newman
 Carl E. Pfeifer
 Norma E. Pfeifer
 G. Stanford Schneider
 Shafer Valve Company

Legacy Fellowships (\$2,500 or more)

Raymond Bacquet* (by family & friends)
 James E. Bierly* (by family & friends)
 Dan Burns* (by friends & associates)
Douglas C. Freer* (by family & friends)
 Larry L. Gibson, MD
 Eleanor Homesley*
 Joan W. Meese* (by family & friends)
Mo Minich* (by Ralph E. Minich)
 Ralph E. Minich
 Joyce M. Walters
 Richard M. Walters
 Michael Wilging* (by Bruce & Sondra Wilging)

Fellowships (\$1,000 or more)

Dr. Richard E. Adams* (by William and Kathleen Hurdle)
 Ivy L. Amos
 Helen Anderson
 Sina Baughman Applegate* (by Clare E. Applegate)
 Sharon L. Arnett
 Aten & Menetti Insurance Agency
 Betty Bacquet* (by Meredith N. Stevens)
 Margaret G. Balyeat* (by children)
 Dr. Donald N. Beppard
 Charma Behnke
 Craig Behnke

Eric Behnke
 Heather Behnke
 F. Andrew Black
 Thomas C. Black* (by F. Andrew Black)
 Donald C. Blasius* (by friends & former Tappan company associates)
 Daniel L. Blay (by Joanne H. Blay)
 Dr. Joseph J. Bocka
 Dr. Louis Jeremy Brown* (by Alice Sanford)
 William A. Calhoun* (by family & friends)
 Samuel H. Campbell
 Clara I. Carew* (by John H. Carew)
 John H. Carew
 Dan R. Carmichael
 David L. Carto
 Louise Allison Carto* (by family & friends)
 Willis Frank Carto* (by family & friends)
 Frances Christian (by Miles Christian)
 Miles Christian
 Helene H. Christiansen
 Judge Richard M. Christiansen
 Matthew B. Cockley* (by Macky Cockley)
 Marjorie Sue Collins
 Rex E. Collins
 John W. Cook, Jr.
 Judith A. Croghan
 Thomas H. Croghan, MD
 John O. Crouse* (by Hugh W. Crouse, II)
 Nancie K. Cummins (by Richard S. Cummins)
 Otis M. Cummins, III
 James D. Curry, MD
 Garry Davidson
 Aaron Davis
 Suzanne C. Davis
 Earle J. Deems
 G. E. (Dottie) Deems* (by Earle J. Deems)
 Ann J. Deley* (by Altrusa International of Mansfield)
 Thomas A. Depler

Robert H. Enskat
 Katherine N. Fernyak
 Pamela S. Fleming
 William E. Flinn* (by Dorothy B. Flinn)
 Gayle Gorman Freeman (by General Richard Green)
 France B. Gaubatz
 Judith Gibson
 Earl H. Goetz
 Carl B. Gibson* (by Dr. David M. Gibson)
 Dr. David M. Gibson
 Marie L. Gibson* (by Dr. David M. Gibson)
 Steve Goldman* (by Bill & Carol Goldman)
 James C. Gorman
 Jeffrey S. Gorman
 Michele S. Gorman
 John P. Gross (by Draffan family)
 Henrietta M. Hainer* (by Elizabeth H. Prestel)
 W.R. Hainer* (by Elizabeth H. Prestel)
 Mariann S. Hand
 Ruth Oestreich Harsch* (by Eugene C. Harsch)
 Albert W. Hartman* (by family & friends)
 Jill Hand Hautzenroeder
 Jon Hautzenroeder
 Frederick R. Heifner* (by family & friends)
 Geneva C. Heifner* (by Pamela H. Siegenthaler)
 Oliver P. Heller* (by family & friends)
 James D. Henson
 Pricilla W. Herbert
 C. J. Hire
 Phyllis F. Hire
 Becky Hoffman (by Dr. William C. & Ruth Newman)
 Ed Hoffman (by Dr. William C. & Ruth Newman)
 Fred B. Hout
 Edith B. Humphrey
 John J. Kastelic
 Margaret E. Kay (by Thomas Kay)

James W. Kehoe
 George H. Keyser* (by Barbara Keyser)
 Ann L. Konstam
 Janice L. Kuhn
 Marion W. Lederer* (by Robert W. Lederer)
 Robert L. Lee
 Timothy L. Lehman
 David Letizia (by Pete & Susan Bailey)
 Daniel K. Lichtenstein* (by Sally S. Lichtenstein)
 L.O.L.'s (by Thomas & Margaret Kay)
 Robert E. Mabee
 Mansfield Assemblies
 A. Robert Matthews
 E. William McCarrick
 James McCormick* (by Nanciann McCormick)
 Nanciann McCormick
 Pauline Keller McKinney* (by Barbara Keller Lederer)
 Betty L. Massa
 E. Tom Mattox
 Joan Watson Meese
 Robert B. Meese
 Leona M. Miles
 National City Bank
 Ohio Horsemen's Council, Richland County Chapter
 Ray Piar
 David Pollock (by Jack Pollock)
 David Pollock* (by family & friends)
 Delight Patricia Poth* (by Dr. James Jones)
 Burton L. Preston (by Prudence Preston)
 Burton R. Preston
 W. Lee Preston (by Burton Preston)
 John Bradley Rhind
 Betty D. (Bets) Risser
 Dell M. Robinson (by John Robinson)
 John Robinson
 Joe R. Roby
 John S. Roby
 Joan G. Ross (by W. Thomas Ross)
 Allen M. Sanford

Irene McCanne Sanford* (by Allen M. & Henry M. Sanford)
 Henry B. Sanford* (by Allen M. & Henry M. Sanford)
 Jean U. Sauter
 Rev. Clifford Schutjer
 Patricia Schutjer, PhD
 Angela Scurci
 Kyle Evan Shaw* (by Douglas & Judith Brunk)
 Charles Patrick Siegenthaler* (by Sally S. Lichtenstein)
C. Peter Siegenthaler (by Sally S. Lichtenstein)
 Mary Mead Siegenthaler (by Sally S. Lichtenstein)
 Clara H. Siegenthaler
 John H. Siegenthaler
 Pamela H. Siegenthaler
 Thomas A. Siegenthaler
 Thomas A. Siegenthaler* (by family & friends)
 Thomas R. Siegenthaler
 Peter A. Sminchak* (by family & friends)
 Janet B. Nicely Smith (by Rev. Wray C. Smith, DD)
 Rev. Wray C. Smith, DD (by Janet B. Nicely Smith)
 David J. Strub
 Richard G. Taylor
 U of M/OSU (by F. Loyal Bemiller & O.M. Cummins, III)
 Michael Vucelic (by Inge S. Vucelic, PhD)
 Martha A. Walter (by Richard L. Walter)
 Richard L. Walter
 Jean E. Welge
 Merris A. Welge, Jr.
 John W. Welsh
 Betty E. Wells
 Fred J. Wiecher, MD
 Doris Williams
 J. George Williams

* Contributed in Memorium

Bold Type indicates new Fellowship or new level of contribution in 2013



Walter and Candace Chaffee planned a gift to the Foundation and are Legacy Society members.

The Legacy Society was created by the Board of Trustees to recognize individuals who have made plans to leave a gift to this community in partnership with the Richland County Foundation.

The Legacy Society

Donors may create a lasting legacy by making a gift through their estate plans, through a qualified retirement plan or IRA, through an insurance policy, remainder trust, Charitable Gift Annuity, or through some other planned gift.

The Richland County Foundation acknowledges the following generous people who have planned a legacy to their community through gifts that will eventually come to the foundation and will benefit the community forever.

- | | |
|----------------------------------|-----------------------------------|
| Dr. Charles & Constance* Adair | Thomas R. & Margaret* Kay |
| Ronald L. & Janeen* W. Adams | Dr. Joel Kaye |
| Pete H. & Susan Gallagher Bailey | Dan & Barbara McBride |
| Vin & Jo Black | Everett W. & Beverly Miller |
| Billie Brandon, J.D. | Rev. William C. & Ruth* M. Newman |
| Candice Chaffee | Richard H. Otto |
| Walter Chaffee | Stephen M. Shoup |
| David & Julia Crawford | Robert & Margaret Soulen |
| Dr. James & Joyce Curry | Judith E. Stroup |
| Bob* & Esther Fry | Robert* & Stella Sutter |
| William G. Hailey | Ralph & Martha Turley |
| John F. & Lin H.* Harkness | Larry & Jean VonBlon |
| Eugene & Ruth* Harsch | Marion Draffan Wisdom |
| Linda A. Hering | |
| Carol S. Kautz | |

* Deceased



**RICHLAND
COUNTY
FOUNDATION**

For good. For ever.®

Connections is looking for the next generation of philanthropists

When Connections at the Richland County Foundation began a decade ago, the focus was to engage, foster and grow the next generation of givers.

Founding Connections members include Joanne Blay, Geneva Cummins, Carl Fernyak, Terri Hamilton, Bill Naumoff, Maura Siegenthaler and Josh Taylor. Following several months of meetings, Connections was created in October of 2004 with an original fund of \$5,000. Now the endowment totals more than \$100,000.

Each year between \$2,000 and \$11,000 is granted to local non-profit organizations.

- Jeff & Robin Barrett
- Jennifer Barrett
- Paul & Laurie Boggs
- Brian & Amy Staker Breitingner
- John A. Brown
- Bob & Paula Cohen
- Bruce M. & Geneva Cummins
- Tim & Deb Cusic
- Rodney and Kimberly Earick
- Drs. Jonathan & Erin Fain
- John & Carrie Fanello
- Mark Fanello
- Dr. DaleAnne Featheringham
- Carl & Annamarie Fernyak
- Scott & Jennifer Foster
- Cristen Gilbert
- Gayle Gorman Green
- Martha Bickley & Bradford Groves
- Chriss Harris
- Joseph E. & Edie Humphrey
- Thomas J. Freund
- Timothy & Tracy Kissinger
- Ed & Barb Kulka
- John & Donna Luedy
- Gary & Molly McCue

- Jason & Andrea Murray
- Jim Nicholson & Dawn Kitchen
- Nick Orosan
- Richard Otto & Linda Hering
- Ken & Amy Parker
- Bob & Erica Parnisari
- Don Harris Jr.
- Nancy Them
- John C. Roby
- Rick Roby
- Matt & Rachel Schag
- Brian W. & Krista Schmidt
- Richard & Susan Schuller
- Sharon Schulz
- Bryan & Annette Schutjer
- Stephanie Seveigny
- John and Maura Siegenthaler
- Brent Taylor
- Josh & Jennifer Taylor
- Maura J. Teynor
- Scott Them
- James Twedt
- Lawrence W. & Jean L. VonBlon
- Shane & Kristen Wiltanger
- Brett & Cheryl Young

Connections 2013 grants:

City of Mansfield – Ocie Hill
STEM Career Project

Discovery School
*The Natural World Around Us
Outdoor Learning Space*

Domestic Violence Shelter
The MOST Club

Faith United Methodist Church
Y.O.D. (Youth Offsite Domain)

Lexington Local Schools
Central Pride Days

Mansfield Area YMCA
Healthy Kids Marathon

Ontario Local Schools
*Rachel's Challenge "Start a Chain
Reaction"*

The Women's Fund

at the Richland County Foundation

Benefactors (\$5,000 or more)

Helen Anderson
 Eleanor Beagle* (by Nancy L. Jackson)
 Elizabeth M. Black
 Elizabeth T. Black
 Elizabeth T. Black* (by Frank T. Black Family Foundation)
 Constance F. Brody, Ph.D.
 Candice Chaffee
 Mary Jane Cress
 Katherine N. Fernyak
 Carol R. Goldman
 Hansen Fund, The
 Hazel R. Hansen
 Phyllis F. Hire
 Betty J. Horner
 Edith B. Humphrey
 Nancy L. Jackson
 Margaret Kay* (by Thomas R. Kay)
 Barbara A. Keyser
 Marjorie M. Kieffer
 Barbara Lederer
 Betty L. Massa* (by Mark Berno)
 Mechanics Savings Bank
 Richland Bank
 Salli S. Rohm
 Pamela H. Siegenthaler
 Elizabeth L. Smith
 Linda H. Smith
 Matthew P. Smith
 Carol B. Taylor
 Helen Taylor
 YMCA 1976 Girls Swim Team

Patrons (\$2,500 or more)

Betty J. Adair
 Pat Addeo
 Dorothy Durham Ashbaugh* (by Sara A. Goin)
 Elsie May Hobday Ashbaugh* (by Sara A. Goin)
 Elizabeth T. Black* (by Elizabeth M. Black)
 Mary K. Bolin
 Joan H. Brown
 Portia Cummins Carto* (by Elizabeth M. Black)
 Portia Cummins Carto* (by O. M. Cummins III, Sara L. Cummins, & Suzanne C. Davis)
 Fran Christian* (by Helen Taylor)
 Suzanne C. Davis

Patricia DeCenso
 Susan Duncan Gentile
 Judith Gibson
 Sara A. Goin
 Meredith Rae Haber* (by Rebecca A. Smith)
 Alberta Harber (by Arlene Senser)
 Margaret Harrison (by Helen Taylor)
Donna Hartnett* (by friends & family)
 Jill Hand Hautzenroeder
 Janet E. Wobbecke Hudson
 Key Foundation
 Virginia D. Kirkwood
 Margaret A. Lindley
 Manairco Employees (by Gayle Gorman Freeman)
 Mansfield Dental Auxiliary
 Pearl Neer Plank* (by Verdabelle P. Miller)
 Lydia J. Reid
 Mary L. Riedl
 Suzanne Schamadan
 Lillian Senser* (by Arlene Senser)
 Janet B. Nicely Smith
 Ottelia B. Stoodt* (by Salli Rohm)
 Helen Taylor Family, The
 Frances K. Welsh
 Janene Ann Yeater

10th Year Anniversary Founders- \$1000 in 2006

Lucy A. Amsbaugh
 Mary Jo Black
 Leah Humphrey Blay (by Joanne Blay)
 Mary Jane Cress
 Steven O. Cummins and Karen Redfearn
 Lois C. Flinn* (by friends)
 Miriam E. Gilbert (By Miriam T. Gilbert)
 Anna Mae Jones* (by Mary Lou Herrold)
 Deborah M. Schenk
 Pamela H. Siegenthaler (by Geneva S. Cummins & Claire Proto)

Founders (\$1,000 by Dec. 31, 1997)

Jeanne Alexander
 Mary E. R. Alletto
 Anonymous Donor
 Kristin Arnold
 P. K. Athmaram, MD
 Susan G. Bailey
 Cynthia Baker
 Michelle K. Ballinger
 Mary Ellen Barr* (by Carol Brown & Kathleen Mehl)
 Helen Bartlett
 Marianna Basting

Janice Beddard
 Charma Behnke
 Cindy Biggs
 Mary Jo Black
 Elizabeth H. Blay (by Daniel L. Blay)
 Joanne H. Blay
 Maggie Bolin (by James R. Bolin)
 Billie Brandon, JD
 Emily Campbell Brown
 Clarita L. Burton
 Fran H. Christian
 Virginia Clay, PhD
 Clare Duncan Clemens
 Geneva S. Cummins
 Sara L. Cummins
 Joyce A. Curry
 Diane M. Daniels
 Ann Drake
 Rose Ann Dunn
 JoAnn E. Dutton* (by Joseph Dutton)
 Ellen Eckert
 Deborah A. Exten
 Erin B. Fain, MD
 Susan E. Fain (by Erin B. Fain, MD)
 Shelley E. Fisher
 Pamela S. Fleming
 Celia J. Flinn, MD
 Gayle Gorman Freeman
 Harriett Freeman (by Linda H. Smith)
 Peggy Jean Fry* (by Constance Ament)
 Veda J. Gardner
 Frances B. Gaubatz
 Miriam T. Gilbert
 Julie A. Giunti* (by Laurie A. McKeon)
 Catherine D. Goldman
 Joetta Goodman
 Harriet Steele Keating Harbage* (by Karen K. Bierly)
 Linda Haring
 Geneva C. Heifner* (by Pamela H. Siegenthaler)
 Laurie Hickox, DVM
 Barbara J. Huston
 Charla A. Irvin
 Margaret M. Joyce
 Linda Kafer, PhD
 Julie Kleshinski
 Vicki Kolb
 Shannon S. Lang
 Karin Fleming Manning
 Elizabeth F. Marquardt
 Betty L. Massa
 Jane McKean
 Jeanne Meisse
 Jane Meyer

Henry P. & Marjory L. Michaels* (by Carol Michaels)
 Shirley Monica
 Judy & Larry Pabst
 Sophie Crittenden Polhemus
 Claire Siegenthaler Proto
 Betty D. Risser
 Jane A. Risser
 Julia Rohles
 Alice B. Sanford
 Dell M. Robinson Sanford
 Deborah M. Schenk
 Arlene Senser
 Clara H. Siegenthaler
 Benjamin D. Smith
 Christopher M. Smith
 Elizabeth L. Smith (by Benjamin, Christopher, & Lauren Smith)
 Lauren Z. Smith
 Cassandra Stein
 Sally Stevens
 Catherine K. Stout
 Zoe M. Swain
 Marcine Taylor
 Lynn E. Humphrey Timmons
 Heather, Melissa, & Susan Tsavaris
 Cindy Kalinoff Watson
 Anne C. Wendling
 Suzanne S. Wilson

Advocates (\$1,000 since Jan. 1, 1998)

Deborah L. Adams
 Altrusa International, Inc. of Mansfield
 Ivy Amos
 F. Andrew Black
 Claire Blay (by Joanne & Dan Blay)
 Glenna Cannon
 Teresa Cooperider
 Bambi Couch Page
 Emma Lousie Cummins (by Geneva S. Cummins)
 Nancie Cummins
 Barbara Cuning
 Rees Davis* (by family & friends)
 Suzanne C. Davis (by Elizabeth M. Black)
 Kay Fathe* (by Helen Taylor)
Annamarie Fernyak (by Katherine N. Fernyak)
Stephanie Fernyak, Dr. (by Katherine N. Fernyak)
 Susan E. Fernyak, MD
 Marcy Sweda Flinn* (by Celia J. Flinn, MD)
 Pamela Fonseca
 Alice A. Frazier
 Harriett Freeman

Esther M. Fry
 General Motors-Mansfield Plant
 Sandra Gibbons
 Bernice Goldman* (by Bill & Carol Goldman)
 Mariann S. Hand
 Edward Hansen (by Sandy Gibbons & Hazel R. Hansen)
 Alta J. Hartman* (by Maxine Smith)
 Lisa & Scott Humphrey
 Hilda Johnson* (by Betty J. Adair)
 Nancy Joyce
 Mary Jo Hull (by Helen Taylor)
 James W. Kehoe (by Shelby Foundation)
 Terry B. Kehoe (by Shelby Foundation)
 Nancy Kolb
 Ann L. Konstam
 Jane Ann Korol* (by Stanley Korol)
 Martha Ellen Stahl Lenhart (by LaDonna J. O'Neal)
 LTV Copperweld
 Mariou Marshall
 Marilyn McCready
 Pauline Keller McKinney* (by Barbara Lederer)
 MedCentral Employee Civic Fund
 Carol Melchior
Mary Moloney* (by Jane McKean)
 Gabriella Morando* (by Jim & Elizabeth Morando)
 Agnes E. Moritz* (by Fred Moritz)
Katherine Norem* (by Katherine N. Fernyak)
 Georgia Kelly Nosker (by Judith Croghan)
 Cynthia B. O'Neal
 Jane K. O'Neal* (by William & Ladonna O'Neal)
 Rani Piar
 Norma E. Pfeifer* (by Carl E. Pfeifer)
 Mary Kay Ransdell
 Cynthia M. Roby
 Kristen C. Rohm (by Salli Rohm)
 Gretchen Rohm-Ensing (by Salli Rohm)
 Bonita Ronk
 Kim J. Ronk (by Bonita Ronk)
 Carolyn L. Rusteburg
 Nancy Peppard Rupp* (by family & friends)
 Christine Schenk* (by family & friends)
 Dorothy Correll Smith* (by Lucy A. Amsbaugh)
 Martha B. Tawse
 Louise H. Taylor
 Dorothy Van Voorhis* (by Sally Workman)
 Karen Rohm Williams (by Salli Rohm)

Bold indicates new level of giving

*Contribution in memoriam

For women, by women, for the future

The Women's Fund at the Richland County Foundation hopes to reach a monumental goal by 2016, \$1 million dollars in its endowment. In order to reach the milestone the Women's Fund is recruiting donors. A person becomes part of the fund simply by making a monetary gift; often to celebrate or honor a special woman.

The fund was formed in 1996 to promote philanthropy among women to provide funding to programs and projects that empower women and girls to achieve their full potential.

Since its inception the Women's Fund has awarded 157 grants totaling over \$264,000.

The Women's Fund Advisory Board members include, 1st row: Carol Chambers, Jeanne Meisse, Suzanne Davis, Billie Brandon, Judie Collins and Ruby Wilkes-Feagin. 2nd row: Lynn Fahmy, Lydia Reid, Fran Welsh, Paula Cohen, Carolyn Carto and Judy Gibson. Not pictured: Janice Beddard, Mary Cabrera Kennard and Thelda Dillon.

Parenting is the focus of the grants awarded by the Women's Fund.

City of Mansfield – Department of Regional Community Advancement
Bottoms Up! Help Me Grow Project

Emergency Pregnancy Aid Contact (EMPAC)
Loving + Learning = Bonding

Harmony House Homeless Services, Inc.
Feed, Flower, Flourish

Parent Aide Program, Inc.
Enriching Foundations for Moms

College Scholarships
2 - Non-traditional students



Memorial and Honor Gifts

Constance Adair	Jo Ann Duvall	Jack Hively	Shirley Schoenman
Betty Bacquet	Everett Eckstein	Amy Hockett	Joseph Seibert
Raymond Bacquet	Carla Eisenloffel	Janet Kehres	Robert Seibert
Martha Baer	Lenora Emerson	Lillian Kenderes	Colleen Seymour
Eleanor Beagle	Gretchen Rohm Ensing	Legenza Family	C. Peter Siegenthaler
F. Loyal Bemiller	Mary Anne Eutzky	Mary Lesseuer	Clara Siegenthaler
Judith Bemiller	Nabil G. Fahmy	Juanita Lindley	Sondra Siegenthaler
Roger Benjamin	Yvette Fahmy	Longley Sisters	Joann Smith
James Bierly	Lucia Fazzini	Helen Macky	Sarah Davis Spearing
Enid R. Black	Annamarie Fernyak	Betty Massa	Ruth M. Stall Stimmell
Bea Bogner	Christine Fernyak	Katherine McCarrick	Ottelia Stoodt
Marilyn Boling	John C. Fernyak	Thelda McDermott	Eva Stuckman
Sarah Brandon	Katherine Fernyak	David McVicker	Suzanne Sumner
Emily C. Brown	Stephanie Fernyak	Eva Melnik	Cristine Sutter
Frances Carto	Susan Fernyak	Judith Merrill	John Sutter
Dortha Chilcote	Alma Fisher	Mo Minich	Robert Sutter
Claire Clemens	Andrew Fisher	Mary Moloney	Stella Sutter
Margaret Close	Mark S. Fisher	Jenny Motley	Theresa Sutter
C.C. Cochard	Robert Fisher	Emma Heintz Nelson	Jon Taylor
Ben Contra	Jane Ann Flory	Katherine Norem	Jennifer Tetrick
Carol Core	Douglas C. Freer	Ron Pence	Joyce Tilus
Carmen Croghan	Betty French	Norma Pfeifer	Janet Turley
Jessica Croghan	Catherine Garber	Les Pierce	William J. Tyznik
Kathleen Croghan	Veronica Groff	Murl Preble	Wendi Ward
Geneva Cummins	John P. Gross	Claire Proto	Naomi Z. Watson
Elinore Cuning	Marjorie Hail	Bets Risser	Frances Welsh
Grace Cunningham	Ada Hall	Rick Risser	DeeDee Wessling
Gwen Cunningham	Mariann Hand	Kristen Rohm	Jane Wessling
Marc Davis	Catherine Haring	Salli Rohm	Karen Rohm Williams
Tim Davis Jr.	Nancy & Rich Hartman	Maxine Ross	Ashley Yetzer
Tom Doty	Donna Hartnett	Dell M. Sanford	Carl Ziehm Jr.
Karen Duffey	Geneva Heifner	George V. Sautter	

New Gifts

A
 Patricia Addeo
 Laverne M. Airhart
 Ivy L. Amos
 Lucy A. Amsbaugh
 John A. & Norma J. Armstrong
 George & Margie Arnold
 Mark & Sandi Arnold
 Asebrook & Co. Architects

B
 Ephraim H. Bacquet
 Marcia Baer
 Pete & Susan Bailey
 Richard L. Baker
 Jeff & Robin Barrett
 Angus W. & Jane Barton
 Richard & Sally Beal Benevolence Fund
 Janice Beddard
 Ed Beer
 Larry & Linda K. Beer
 Thomas H. & Marilyn A. Beerman
 Wayne & Pat Bell
 F. Loyal & Judith Bemiller
 Mike & Tina Bennett
 Mark Berno
 C. Ruth Berry
 Big Brothers/Big Sisters of N. Central Ohio
 Candy K. Bishop
 Martha Jane Black
 Mary Jo Black
 Frank T. Black Family Fund
 Marian H. Blahnik
 Virginia A. Blizzard Charitable Remainder Annuity Trust
 Mary Boals
 Dr. Joseph J. Bocka
 Mark A. & Cynthia K. Bosko
 Ralph Boyd Foundation
 Billie Brandon
 Breitinger Company

Brian & Amy Breitinger
 Charles G. Brown
 John A. Brown
 Joyce W. Brown
 Robert Brown
 The Honorable Sherrod Brown
 Buckeye Pumps, Inc.
 Bucyrus Precision Tech, Inc.

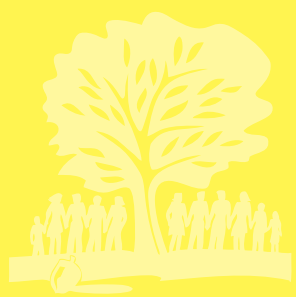
C
 Mary Cabrera Kennard
 Glenna R. Cannon
 Patricia Carlisle
 David D. & Carolyn M. Carto
 David L. & Audrey Carto
 Robert J. Cassity
 Iva-Jean Cavanaugh
 Candice Linden Chaffee
 Charitable Gift Fund
 Patricia Chilcote
 Child Care Choices
 Ettore Chiudioni
 Civitan Club of Mansfield
 Bob & Paula Cohen
 Judie K. Collins
 Mrs. Ben Contra
 Emily M. Coon
 Roger Coulton
 David & Julia Crawford
 Judith Croghan
 Arlene Crosser
 Blaine A. & Gail A. Crosser
 Denice R. Crowner
 Bruce M. & Geneva Cummins
 Richard & Nancie Cummins
 Robert & Mary Jane Cunningham

D
 Mary Damron
 Lee Ellen Davies
 Dennis A. Davis
 Dennis N. & Polly Davis
 Harold H. Davis

Suzanne Davis
 Ted & Brenda Davis
 Joanne Dawson
 Hatcher Day
 Jodie Dees
 Tom & Nancy Depler
 Thelda Dillon
 Discovery School
 Beverly E. Doty
 Jim Dudley & Susan Fernyak

E
 Bonnie Elias
 Elliott Machine Works, Inc.
 Wilma G. Elliott
 Mary Anne Eutzky
 William H. Eutzky
 Ronald R. & Brenda L. Eyerly

F
 Dr. & Mrs. Andrew Fahmy
 Drs. Jonathan & Erin Fain
 James C. Fanello
 John & Carrie Fanello
 Mark Fanello
 Dr. DaleAnne Featheringham
 John & Katherine Fernyak
 Dr. Susan E. Fernyak
 David E. & Nancy B. Ferris
 Andrew S. Fisher
 Bob & Alma Fisher
 Jana S. Fisher
 Pamela Fonseca
 S. N. & Ada Ford Fund
 Scott & Jennifer Foster
 Alice Fraizer
 Dr. Evelyn B. Freeman
 Dr. Gary & Sandra Freeman
 Gregory W. & Carolyn Freer
 Friends of the Mansfield-Richland County Public Library, Inc.
 Mr. & Mrs. M. Scott Fulmer



RICHLAND
 COUNTY
 FOUNDATION

New Gifts

G

Veda J. Gardner Estate
Frances B. Gaubatz
Susan Duncan Gentile
Nicholas & Sally Gesouras
Dr. David M. Gibson
Judy Gibson
Cristen Gilbert
C. Eugene & Sara A. Goin
Bill & Carol Goldman
Steve Goldman Foundation Inc.
Mike & Sheri Gombosch & Family
Rich Green & Gayle Gorman Green
Nancy A. Green
John P. Gross Trust
Martha Bickley & Bradford Groves

H

Bernard M. & Sherry Hallabrin
James Hallabrin
Jerry & Tammy Hammett
Mari Haring
Chriss Harris
Dr. David & Linda Hartzfeld
Malinda Heineking
Jim & Debby Henry
Stephany Hepner
Ms. Lucille E. Hering
Hi-Stat Manufacturing Co., Inc.
Marilyn Hixson
Julia K. Hoffman
Bradley & Lee Hostetler
Marilyn J. Humeston
Joseph E. & Edie Humphrey
Willie L. Hunn
William & Kathleen Hurdle

I

Integrity Insurance Solutions

J

Dr. Bruce & Nancy L. Jackson
Marie Jackson

Jay Plastics, Inc.
Janet S. Jaynes
Kathy Jenney
Philip & Marilyn Johnson
Leah R. Jones
JP Morgan Chase Foundation

K

Neal E. & Romyne T. Kaffen
Walter & Ann Kania
John J. Kastelic
Doug & Marilyn Kempf & Family
Mike & Cindy Kenyon
Kina A. Kerst
Barbara A. Keyser Fennell
Marjorie M. Kieffer Estate
Yolanda Kirschner
Lee & Reta Kirsh
Lee Kohler
Sylvia Kolonie
Nicholas Kozimor
The Kroger Company
James & Jean Kulig
Jennifer J. Kuns

L

Pat, Dawn & Tyler La Susa
Marjorie M. Leonard
Lexington Alumni Association
Lexington Avenue Offices LLC
Sarah S. Lichtenstein
Lind Outdoor Advertising Company
Katherine Kenyon Lippitt Foundation
Richard D. & Barbara I. Long
Anne Loucks

M

Susan Madura & Karen Butner
Alice & Lewie Main
Justin & Lynn Marotta
Marilou Marshall
Rose Mary Martin
George Mateyo

John P. & Phyllis S. McCarrick
Mary Lou McClarren
Eleanor Searle Whitney McCollum
Foundation
Gary & Molly McCue
Lois M. McCullough
Frances McCurry
George G. McElligott
Patricia McGinty
Jane McKean
Laurie McKeon
Dell Armstrong McMillen Fund
Jean McVicar
Meadow Estates Limited Partnership
Robert B. Meese
Dixie G. Mehock
Mennel Milling Company
Milliron Foundation
Ralph E. Minich
Mintz Family Foundation, The
Moritz Concrete, Inc.
Martin & Lora Moritz
MT Business Technologies, Inc.
Jim & Cindy Mudra
Jana Mulherin
Jason & Andrea Murray

N

Gary A. & Lucy B. Negin
Linda Nelson
Tim, Cindy & Thomas Nesbitt
Sharlene Neumann
Dr. William C. Newman, D.D.

O

Cynthia B. O'Neal
Ontario Swim Team
Jennifer S. Opperman
The Ohio State University - Mansfield
Richard Otto & Linda Hering

P

Ken & Amy Parker

Bob & Erica Parnisari
Constance F. Pastor
Pepperidge Farm, Inc.
Carl E. Pfeifer
Dan & Sue Phallen
Ray & Rani Piar
Pineridge Investments, LLC
Pioneer Career & Technology Center
John Pottmeyer
Maureen Prinz
Jonathan B. Pulcini

R

Rable Machine Inc.
James J. & Helen E. Rahall
Mark & Pam Reed
Dorothy A. Rein Estate
Reitler Insurance Agency
Renaissance Performing Arts
Richland Bank
Richland Newhope Industries, Inc.
Riester, Lump & Burton, CPA'S Inc.
Judy Riley
Jane A. Risser
Roby Foster Miller & Earick Ins. Co.
Richard & Salli Rohm
Gretchen Rohm-Ensing
Richard & Bonita Ronk
Rosenthal Family Foundation
Thomas & Joan Ross
Rotary Club of Mansfield
Timothy K. & Terri A. Rupert
The Fran & Warren Rupp Foundation

S

Roger and Heidi Sanderson & Family
Allen M. Sanford
Dell M. "Boots" Sanford
Steve & Lori Santmyer
Jean U. Sauter
Ludwig E. & Deborah M. Schenk
Brian W. & Krista Schmidt

New Gifts

G. Stanford Schneider Trust
Paul & Sue Schneir
Richard & Susan Schuller
Bryan & Annette Schutjer
Cliff & Pat Schutjer
Schwan's Home Service, Inc.
Nancy Seibert
Thomas L. Seitz
Select Sires, Inc.
Melinda Semerar
Stephanie Seveigny
Andrew Shiplet
Paul and Adelyn Shumaker Foundation
Donald K. Sidle
Dave & Theresa E. Siebold
John & Sondra Siegenthaler
Thomas R. & Pamela H. Siegenthaler
Charles T. Sinsabaugh
David & Peggy Sipes
Jan Smith

Laurie Smith
Mark & Debbie Smith
Matthew P. & Linda H. Smith
Melvin L. Smith
Tobie A. Smith
Troy A. Smith
Snyder Funeral Home
Sherri Somers
South Main Historic, LLC
Mark & Beth DeLaney
Darrell & Brenda Starr-Jude
James William Stepro
W. Chandler & Elizabeth Stevens
Jon Stinehour
Gary R. Stroup
Mark & Deborah Stull
John & Suzanne Sumner
John Yatko & Cristine Sutter
John A. & Theresa R. Sutter
Rosemary J. Sutter

Stella Sutter
T
The Tagg Family
Tracy Tappan
Brent Taylor
Richard G. Taylor
Maura J. Teynor
Scott Them
Albert Touby
Ralph & Martha Turley
James Twedt
U
Richard & Sally Uhde

V

Sam & Janet VanCura
Craig C. & Susan L. Vandlik
Wesley & Sandra J. Volz
Lawrence W. & Jean L. VonBlon
Dan & Jane Vorbroker

W

Dr. Blake D. & Gere C. Wagner, Sr.
Mary Ellen Walter
Richard M. & Joyce M. Walters
Helen E. Wappner
Wednesday Study Club
Melissa K. Weirick
Weithman Bucyrus, LLC
Dennis & Lori Welfle
David, Julia & Reid Welsh
Frances K. Welsh
Dr. James Wiggin
Christopher (CJ) Wilging
Ruby Wilkes-Feagin
Doris Williams
Shane & Kristen Wiltanger
E. Harry & Joan K. Wirstrom

Y

Ms. Jean Yost

Z

Jerry & Minnie Zeger



Suite 100
24 West Third Street
Mansfield, OH 44902-1209
419.525.3020 telephone
419.525.1590 fax

NON-PROFIT
ORGANIZATION
U.S. POSTAGE
PAID
MANSFIELD, OH
PERMIT NO. 193

www.rcfoundation.org



The Richland County Foundation has been recognized for having organizational and financial practices that are in compliance with National Standards for U.S. Community Foundations.

The mission of the
Richland County Foundation
is to improve and enhance
the quality of life in
Richland County through
strategic philanthropy and
community leadership.

Provide Leadership and act as a catalyst in identifying and addressing emerging community needs.

Distribute Grants for charitable purposes in the areas of Health, Economic and Community Development, Basic Human Needs, Education, Arts & Culture, the Environment, and Community Services.

Prudently Manage the Foundation's resources to achieve the maximum benefit for Richland County in perpetuity.

Identify and Cultivate Donors of all economic means and charitable interests.

Assist Donors in establishing funds to meet community needs and distribute proceeds in accordance with the donor's intent.